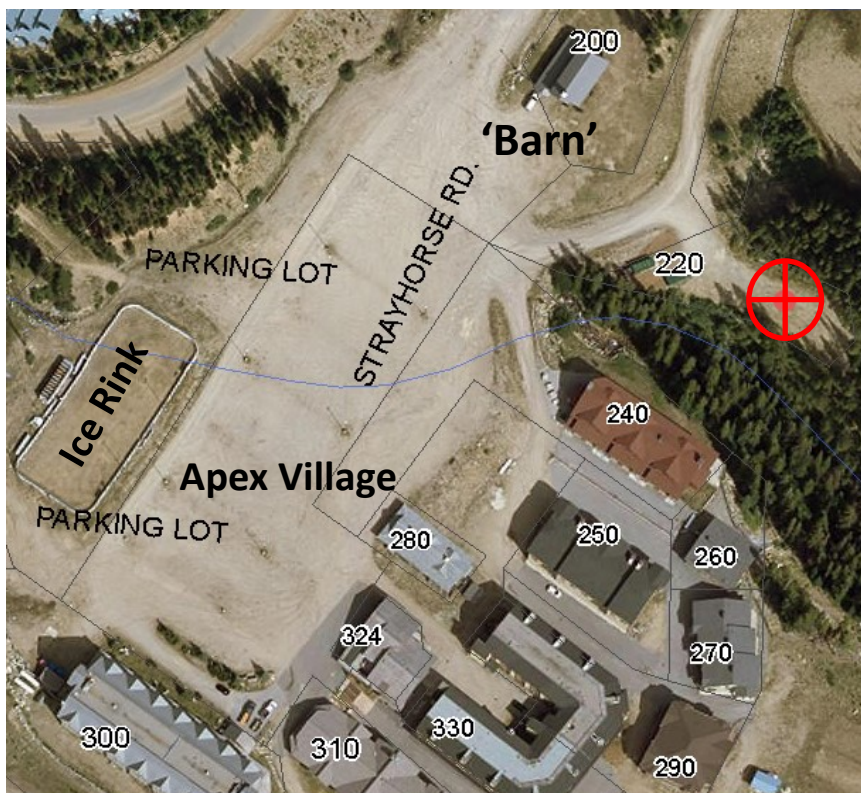


# Apex Mountain Waste Transfer Station



December, 2019



## Waste Transfer Station

**220 Strayhorse Rd**

below 'Barn' in main parking lot

**5 minute parking enforced**



## Garbage Accepted at Transfer Station:



- Loose or bagged garbage accepted
- NO furniture, appliances or mattresses
- NO construction materials
- NO scrap metal
- NO hazardous/flammable items or batteries

## Recycling Accepted: Clean and Dry. Place in Loose. No bags.



**Paper &  
Cardboard**



**Hard Plastic Bottles,  
Tubs and Lids**



**Cans and  
Aluminum Foil**



**Paper Cartons,  
Tetrapaks**

- NO glass
- NO plastic bags
- NO batteries
- NO food waste

*More details on back page*

### COMMON QUESTIONS:

#### What are the hours the Transfer Station is open?

The Transfer Station is scheduled to be open at all times. This may change if issues arise. Any changes of hours will be sent to all property owners and posted at the site.

#### Can people park at the Transfer Station property as overflow parking?

No. Parking is restricted to 5 minutes to allow all users access. Vehicles may be towed.

#### Is the site under video surveillance?

Yes. The RDOS has a policy on how the cameras can be used. For more information contact the RDOS using the info below.

#### Can large items and electronics be dropped off?

No. There is no safe way to receive large items like furniture, appliances or mattresses at the site. Electronics can contain lead or dangerous chemicals that need to be recycled safely. The RDOS is looking at potential options for a spring large item collection. The Campbell Mountain Landfill in Penticton can receive these items.

#### Can renovation materials or scrap metal be dropped off?

No. Renovation, demolition and construction waste and scrap metal can damage the compaction equipment. Renovation materials can also contain asbestos, lead paint, mercury or other hazards. Contact the RDOS for demolition and construction waste disposal options.

#### How is the Transfer Station paid for?

In 2017, the RDOS Board determined that the building and equipment will be paid for by taxes and the operational costs will be invoiced individually to all homes and apartments at Apex. All homes and apartments will be charged annual fees in the spring. For more information contact the RDOS Finance Department.

#### Can blue or clear bags be used for recycling drop off?

No bags including blue and clear bags can be placed in recycling. Bags and pouches wrap around equipment and contaminate other recycling.

### List of what can go in recycling bin if clean and dry. Remove all bags. Place bags in garbage:

- Newspapers and inserts
- Magazines and Catalogues
- Directories/Telephone Books
- Paper and Envelopes
- Cardboard and Boxboard
- Tetra / Gable Top containers
- Cans and Aluminum Foil
- Tubs, bottles, lids made of plastic



### Common things that should not go in Apex recycling

- **NO** Glass
- **NO** Batteries
- **NO** Plastic Items other than tubs, bottles and lids
- **NO** Bags or Pouches
- **NO** Food Waste