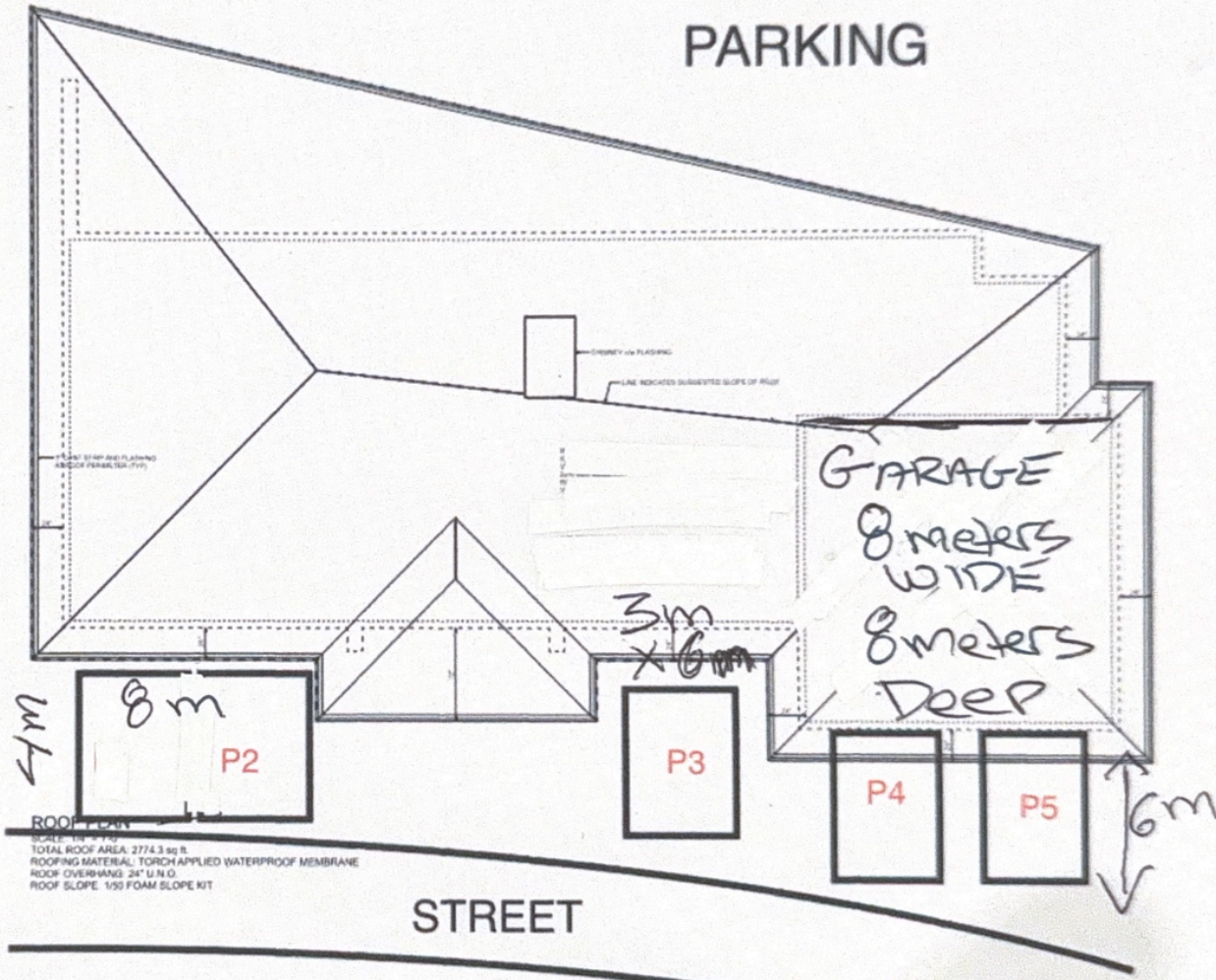


# 3-8401 120th Ave, Osoyoos BC V0H 1V2

EFFECTIVE THERMAL RESISTANCE OF ASSEMBLIES	
<p><b>EXTERIOR WALL (STUCCO)</b></p> <p>EXTERIOR BRICK 90-100 (R-1.0)</p> <p>1/2" GYPSUM BOARD (R-0.05)</p> <p>1/2" POLYSTYRENE INSULATION (R-5.0)</p> <p>1/2" GYPSUM BOARD (R-0.05)</p> <p>EXTERIOR FINISH (R-0.05)</p> <p>EFFECTIVE THERMAL RESISTANCE OF ASSEMBLY: R-6.15 (R-10.15)</p>	<p><b>EXTERIOR WALL (CULTURED STONE)</b></p> <p>EXTERIOR CULTURED STONE (R-0.05)</p> <p>1/2" GYPSUM BOARD (R-0.05)</p> <p>1/2" POLYSTYRENE INSULATION (R-5.0)</p> <p>1/2" GYPSUM BOARD (R-0.05)</p> <p>EXTERIOR FINISH (R-0.05)</p> <p>EFFECTIVE THERMAL RESISTANCE OF ASSEMBLY: R-6.15 (R-10.15)</p>
<p><b>EXTERIOR WALL (GARAGE TO HOUSE)</b></p> <p>EXTERIOR BRICK 90-100 (R-1.0)</p> <p>1/2" GYPSUM BOARD (R-0.05)</p> <p>1/2" POLYSTYRENE INSULATION (R-5.0)</p> <p>1/2" GYPSUM BOARD (R-0.05)</p> <p>EXTERIOR FINISH (R-0.05)</p> <p>EFFECTIVE THERMAL RESISTANCE OF ASSEMBLY: R-6.15 (R-10.15)</p>	<p><b>I.C.F. FOUNDATION WALL (FROST WALL)</b></p> <p>1/2" GYPSUM BOARD (R-0.05)</p> <p>CONCRETE WALL (R-0.08)</p> <p>1/2" POLYSTYRENE INSULATION (R-5.0)</p> <p>1/2" GYPSUM BOARD (R-0.05)</p> <p>EFFECTIVE THERMAL RESISTANCE OF ASSEMBLY: R-7.20 (R-12.20)</p>
<p><b>I.C.F. BASEMENT FOUNDATION WALL (8")</b></p> <p>1/2" GYPSUM BOARD (R-0.05)</p> <p>INSULATED CONCRETE FORM (R-1.0)</p> <p>1/2" GYPSUM BOARD (R-0.05)</p> <p>1/2" POLYSTYRENE INSULATION (R-5.0)</p> <p>1/2" GYPSUM BOARD (R-0.05)</p> <p>EFFECTIVE THERMAL RESISTANCE OF ASSEMBLY: R-8.24 (R-13.24)</p>	<p><b>CONCRETE SLAB (UNHEATED FLOOR)</b></p> <p>EXTERIOR WALL (R-0.05)</p> <p>1/2" POLYSTYRENE INSULATION (R-5.0)</p> <p>CONCRETE SLAB (R-0.08)</p> <p>1/2" POLYSTYRENE INSULATION (R-5.0)</p> <p>1/2" GYPSUM BOARD (R-0.05)</p> <p>EFFECTIVE THERMAL RESISTANCE OF ASSEMBLY: R-10.15 (R-15.15)</p>



Note: There are 5 Parking Spots on our property. We also have a 2 car gargaee

WESTHOME PLANNERS INC.  
 1208 MARINE  
 SUITE 101  
 OSOYOOS BC V0H 1V2  
 TEL: 250.435.1234  
 WWW.WESTHOMEPLANNERS.COM

Giroux Design Group Inc. 1208 Marine Street  
 Osoyoos BC V0H 1V2  
 TEL: 250.435.1234  
 WWW.GIROUXDESIGNGROUP.COM

Giroux Design Group Inc. 1208 Marine Street  
 Osoyoos BC V0H 1V2  
 TEL: 250.435.1234  
 WWW.GIROUXDESIGNGROUP.COM

**GIROUX DESIGN GROUP**  
 1208 MARINE STREET  
 OSOYOOS BC V0H 1V2  
 TEL: 250.435.1234  
 WWW.GIROUXDESIGNGROUP.COM

**COPYRIGHTED DOCUMENTS  
 ILLEGAL TO REPRODUCE**

THESE PLANS ARE THE COPYRIGHTED PROPERTY OF GIROUX DESIGN GROUP INC. AND ARE TO BE USED ONLY FOR THE PROJECT AND SITE SPECIFICALLY IDENTIFIED IN THE CONTRACT. ANY REPRODUCTION OR ALTERATION OF THESE PLANS WITHOUT THE WRITTEN PERMISSION OF GIROUX DESIGN GROUP INC. IS STRICTLY PROHIBITED.

PLAN NO: WP-5650  
 SHEET NO: A4

Roof Plan