



WILDFIRE UPDATE

71W22KC - Okanagan Complex

FIRE SIZE:
 Thomas Creek (K51794): 7279 ha (estimate)
 Brenda Creek (K51924): 824 ha (estimate)
 White Rock Lake (K61884) 12,500 ha (estimate)

FIRE STATUS:
 Out of Control

THOMAS CREEK WILDFIRE (K51794)

This fire was first discovered on Sunday, July 11, 2021 and is approximately 5 kilometres northeast of Okanagan Falls.

CONDITIONS:

Fire behaviour increased significantly yesterday, particularly in the north and northeast. This caused the fire to grow towards the height of land between the Okanagan and the west part of the Kettle River Drainage

This increased fire activity is expected to continue in the coming days as hot, dry and windy conditions will persist. No precipitation is anticipated in the near future. These conditions will continue to challenge fire suppression efforts.

OBJECTIVES:

Crews and equipment will continue to work to the north and east of the fire to create and reinforce guard lines using existing roads, old fire guards and other natural features. This is being done in an effort to get ahead of the fire in the north and northeast sections.

Yesterday crews patrolled the guard line on the west flank and began to demobilize equipment from reinforced guard lines in this area. Fire activity was relatively quiet along this western flank. Heavy equipment is being used to build contingency guard lines to the east of the fire. Crews have now secured the 201 road up to the 13 kilometre mark by assessing and removing danger trees that were in striking distance of the road. This ensures safe access for crews and equipment. Crews will gradually widen the safe areas along the road over the coming days, but may be hampered by the expected increase in fire activity. Access along the northeast portion of the 201 road was challenged yesterday due to heightened fire activity.

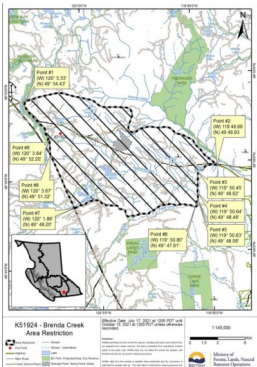


RESOURCES:

- Firefighters – 21
- Heavy Equipment - 14
- Helicopters – 5 assigned

EVACUATION ALERTS & ORDERS:

The Regional District of Okanagan-Similkameen (RDOS) has issued an Evacuation Alert for 704 properties in Electoral Area "D." More information is available here: <https://www.rdos.bc.ca/>



The BC Wildfire Service and the Canadian Armed Forces will do a reconnaissance of this fire tomorrow morning to determine suitable objectives. 90 military personnel are expected to be working on this fire as early as Wednesday morning.

This fire is being managed by a BC Wildfire Service Incident Management Team as part of the Okanagan Complex. Aircraft and other resources may be reallocated from day to day within the complex as priorities shift.

AREA RESTRICTION:

In the interest of public and responder safety, a new Area Restriction was implemented for the Thomas Creek Wildfire area on July 21, 2021 and further updated on July 24, 2021 More information is available at: www.bcwildfire.bc.ca.



Danger tree faller addressing a burning tree for safety in the Thomas Wildfire on July 25.

ADDITIONAL CONTACT INFORMATION:

71W22KC - Okanagan Complex Information Section

Telephone: 250-230-3670 | Email: BCWS.Okanagan.Complex.Info@gov.bc.ca



www.bcwildfire.ca



BC Forest Fire Info



@BCGovFireInfo



www.firesmartbc.ca



BRENDA CREEK WILDFIRE (K51924)

This fire was first discovered on Wednesday, July 14, 2021 and is an interface fire.

CONDITIONS:

Fire behaviour increased yesterday due to warmer and drier conditions, but overall fire growth was minimal. The most active portion of the fire was near the southwest flank (where rank 3 fire behaviour continues to threaten the transmission line). An increase in fire activity may occur in the coming days as hot, dry and windy conditions will persist. No precipitation is anticipated in the near future. These conditions will continue to challenge fire suppression efforts.

OBJECTIVES:

Staff are working to identify and build contingency lines on active flanks of the fire. Crews continue to work on reinforcement of guard lines and mop up under sections of the transmission line.

Last night, There was some growth on the east flank as well as to the north of the Brenda Mine Road. Crews will be working on containment in these areas today, and will action any spot fires that may occur. Winds were calm this morning but are expected to pick up early in the day. The protection of life, property and critical infrastructure remain as the priority.

The high-volume water delivery system that was in place to protect the section of the transmission line within the fire perimeter has been demobilized due to decreased risk in that area of the fire. This water line was instrumental in the protection of the transmission line. The transmission line remains operational.

Crews continue to reinforce sections of guard line on the north west corner of the fire by burning off the fuel between the guard and the fire with small, hand ignition operations.

Helicopters will continue to bucket water on to hotspots, drawing water from nearby lakes.

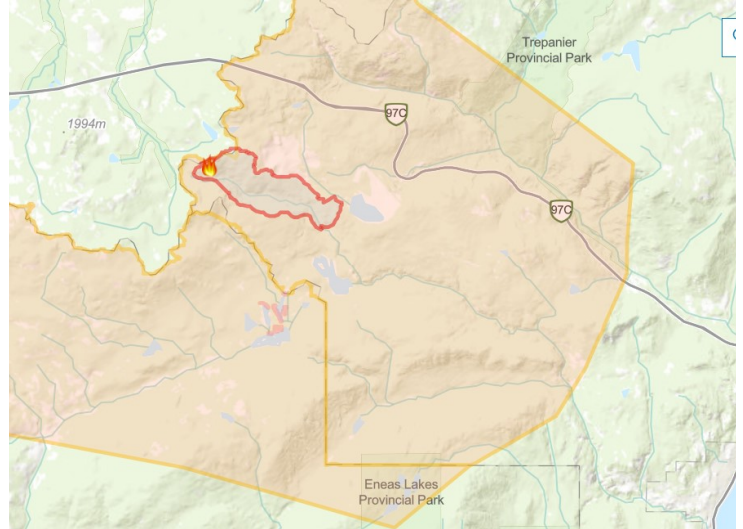
5 firefighters remained on site last night to monitor the fire and protect high value features.

STRUCTURAL PROTECTION:



Brenda Creek Fire (K51924): on morning of July 26.

Remains in place on high value resources with 1 task force leader, 2 high volume water delivery systems (3 crew) and 2 structure protection trailers are on site. They are supported by 17 firefighters from 6 different fire departments, who are making good progress on extinguishing fire along the power line.



The Brenda Creek Wildfire is approximately 40 kilometers west of West Kelowna, south of the Okanagan Connector.
Source: [BC Wildfire Dashboard](#)

RESOURCES:

- Firefighters** – 51
- Heavy Equipment** - 20
- Helicopters** – 4 assigned

EVACUATION ALERTS, ORDERS & AREA RESTRICTIONS:

The [Regional District of Okanagan-Similkameen](#) (RDOS) has issued an Evacuation Order for 43 properties. An Evacuation Alert has also been issued for Eneas Lakes Provincial Park.

The [Thompson-Nicola Regional District](#) (TNRD) has issued an Evacuation Alert for three properties located in Electoral Area "M."

The Regional District of Central Okanagan (RDCO) has issued an Evacuation Alert for properties, three recreational camping areas and Crown land within West Electoral Area, south of Highway 97C and northwest of Peachland. Please contact the [Regional District Central Okanagan](#) for more information.

An Area Restriction is in effect as of noon on July 17, 2021. More information is available, including a map at: www.bc.wildfire.ca

WHITE ROCK LAKE WILDFIRE (K61884)

This fire was first discovered on Tuesday, July 13, 2021 and is an interface fire.

CONDITIONS:

Fire behaviour increased significantly yesterday due to elevated temperatures and increased southwest winds. This aggressive fire behaviour caused growth to the northwest in the Sawmill Lake and Jimmy Lake areas, and produced a large column of smoke. This elevated behaviour is occurring again this morning in the same areas. Extensive smoke and more growth is occurring.

This increased fire activity is expected to continue in the coming days as hot, dry and windy conditions will persist. No precipitation is anticipated in the near future. These conditions will continue to challenge fire suppression efforts and cause additional growth on this fire.

OBJECTIVES:

More structural protection units have been requested. A task force of fire engines will be patrolling and actioning hotspots in an effort to protect properties and high value assets.

Heavy equipment is being used to construct large, cleared areas at regular intervals along the guard lines. These areas are known as "safe zones", and provide crews and equipment a safe place to take shelter in if the fire behaviour should suddenly increase.

Airtankers may continue to be used to apply retardant to the fire if conditions allow. This is done to help slow the spread of the fire and create time and space for equipment and crews to safely build guard lines ahead of the fire.

6 helicopters will be bucketing water on to the fire today. This tactic is used to cool and slow the spread of the fire so that ground crews can safely continue their suppression efforts.

A ground-based retardant unit is being used to reinforce guard lines. This unit is a large truck that can apply the same type of retardant used by airtankers.

A structural protection specialist is on site, assessing and prioritizing critical infrastructure and properties.

Planning and construction of contingency lines continues.

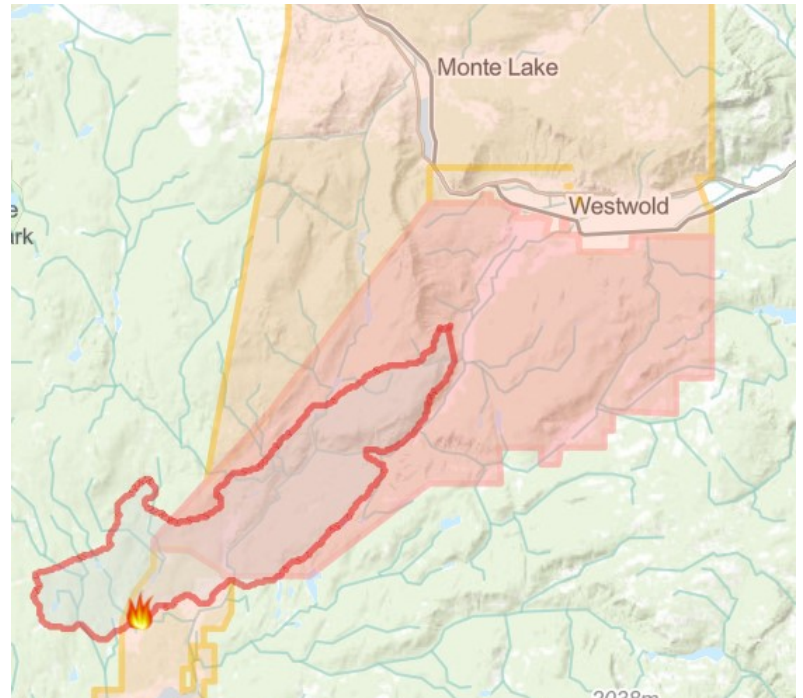
A fire camp is now set up at the Salmon Lake Resort. This will allow firefighters and support staff to be closer to the fire, which will reduce travel time and maximize their working and resting hours.



Southeast side of the White Rock Lake wildfire on the afternoon of July 25

100 firefighters and 12 support staff from Quebec arrived at the Okanagan Complex yesterday. They will be staying in the camp that is now set up at the Salmon Lake Resort and are assigned to this fire. They were briefed and oriented yesterday and will be working on the fire today.

There have been smoke impacts to the hydro line in the area, with multiple outages occurring due to the smoke.



The White Rock Lake Wildfire is approximately 56 kilometers northeast of Merritt.

RESOURCES:

Fire Fighters – 139

Heavy Equipment - 35

Helicopters – 6 assigned

Structural Protection: 1 structural protection specialist, 1 structural protection unit (5 staff), 2 structural protection trailers and 6 firefighters from 2 fire departments are on this fire.

EVACUATION ALERTS, ORDERS & AREA RESTRICTIONS:

The Thompson-Nicola Regional District (TNRD) has implemented multiple Evacuation Orders and Evacuation Alerts for properties in the area. Please contact the Thompson-Nicola Regional District for more information: <https://www.tnrd.ca/>

**FIRE
DANGER
RATING**

