



WILDFIRE UPDATE

71W22KC - Okanagan Complex

FIRE SIZE:
 Thomas Creek (K51794): 6960 ha (estimate)
 Brenda Creek (K51924): 662 ha (estimate)
 White Rock Lake (K61844) 8702(estimate)

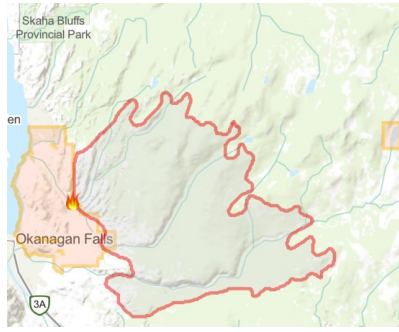
FIRE STATUS:
 Out of Control

THOMAS CREEK WILDFIRE (K51794)

This fire was first discovered on Sunday, July 11, 2021 and is approximately 5 kilometres northeast of Okanagan Falls.

CONDITIONS:

Cooler temperatures yesterday resulted in minimal growth. The most active part of the fire continues to be the north flank, in heavier timber. The fire has now burned into the area of the Christie Mountain Fire, which may result in decreased fire behavior in that area due to a reduction in available fuel. An increase in winds is predicted through Friday, and temperatures will gradually start to increase in the coming days. This may result in elevated fire behavior and additional fire growth.



Source: [BC Wildfire Dashboard](https://www.bcwildfire.ca)

RESOURCES:

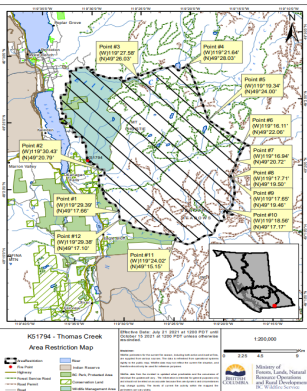
- Firefighters – 27
- Heavy Equipment - 17
- Helicopters – 5 assigned

EVACUATION ALERTS & ORDERS:

The Regional District of Okanagan-Similkameen (RDOS) has issued an Evacuation Alert for 704 properties in Electoral Area "D." More information is available here: <https://www.rdos.bc.ca/>

OBJECTIVES:

The cooler temperatures yesterday also allowed crews to continue making steady progress towards containment on the south flank. Today, crews will be continuing to work on reinforcement of guard lines along the south east flank. Heavy equipment will be used to build contingency guard lines to the east of the fire. Crews continue to make good progress in securing and protecting the 201 road, and will work in this area again today.



This fire is being managed by a BC Wildfire Service incident management team as part of the Okanagan Complex. Aircraft and other resources may be reallocated from day to day within the complex as priorities shift.

AREA RESTRICTION :

In the interest of public and responder safety, a new Area Restriction was implemented for the Thomas Creek Wildfire area on July 21, 2021 @ noon. More information is available, including a map at: www.bcwildfire.bc.ca



Southeast area of Thomas Creek Fire (K51794) with calmer winds on the morning of July 22.

ADDITIONAL CONTACT INFORMATION:

71W22KC - Okanagan Complex Information Section

Telephone: 250-230-3670 | Email: BCWS.Okanagan.Complex.Info@gov.bc.ca





BRENDA CREEK WILDFIRE (K51924)

This fire was first discovered on Wednesday, July 14, 2021 and is an interface fire.

CONDITIONS:

South west winds were consistent on the fire all day yesterday, causing an increase in activity and some growth to the south east. There was a decrease in fire behavior last night, which limited fire growth. Overnight, the high-volume water system was only run intermittently, and crews were able to begin mop up along the transmission line.

OBJECTIVES:

Yesterday, crews continued to reinforce sections of guard line on the north west corner of the fire by burning off the fuel between the guard and the fire with small, hand ignition operations. Helicopters were used to bucket water on to hotspots yesterday, and will continue this effort today. A high-volume water delivery system is now in place to protect the section of the transmission line within the fire perimeter. This delivery system consists of a 4-inch hose line that supplies a series of larger sprinklers. A specialized high-volume pump supplies water to the line, which can be turned on quickly if the threat to the transmission line increases due to increased fire activity. This water line has been effective in assisting with protection of the transmission line, which remains operational. 4 firefighters and 3 support staff remained on site last night to monitor the fire and protect high value features.

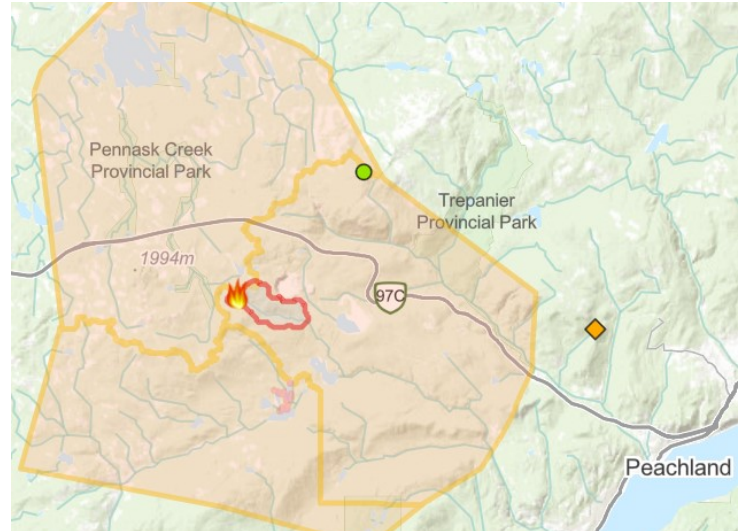
STRUCTURAL PROTECTION:

1 task force leader, 1 structure protection unit (5 crew), 2 mass water delivery units, with 1 on homes and 1 on the powerline (3 crew) and 1



Brenda Creek Fire (K51924) with steady winds on July 22.

structure protection trailer are on site. They are supported by 16 firefighters from 4 different local fire departments, who are making good progress on extinguishing fire along the power line.



The Brenda Creek Wildfire is approximately 40 kilometers west of West Kelowna, south of the Okanagan Connector.

Source: [BC Wildfire Dashboard](#)

RESOURCES:

Firefighters – 43

Heavy Equipment - 15

Helicopters – 4 assigned

EVACUATION ALERTS, ORDERS & AREA RESTRICTIONS:

The [Regional District of Okanagan-Similkameen](#) (RDOS) has issued an Evacuation Order for 43 properties. An Evacuation Alert has also been issued for Eneas Lakes Provincial Park.

The [Thompson-Nicola Regional District](#) (TNRD) has issued an Evacuation Alert for three properties located in Electoral Area "M."

The Regional District of Central Okanagan (RDCO) has issued an Evacuation Alert for properties, three recreational camping areas and Crown land within West Electoral Area, south of Highway 97C and northwest of Peachland. Please contact the [Regional District Central Okanagan](#) for more information.

An Area Restriction is in effect as of noon on July 17, 2021. More information is available, including a map at: www.bc.wildfire.ca

WHITE ROCK LAKE WILDFIRE (K61844)

This fire was first discovered on Tuesday, July 13, 2021 and is an interface fire.

CONDITIONS:

Fire behavior was quiet on most flanks this morning. There was some down slope growth on the north east flank last night, but minimal growth to the north. Crews and resources will continue to be challenged by an increase in fire behavior caused by forecasted winds over the next few days. Temperatures were cooler on the fire yesterday, but are expected to increase through the weekend.

OBJECTIVES:

BC Wildfire Service personnel continue to work with industry partners on site to establish and reinforce guard lines, and to protect critical infrastructure. A structural protection specialist is on site, assessing and prioritizing critical infrastructure and properties.

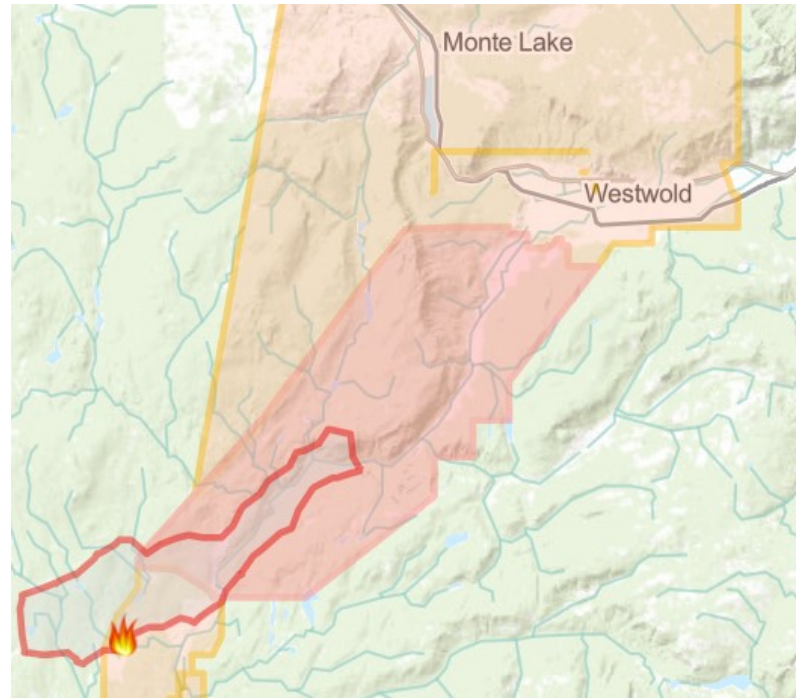
The fire had pockets of increased activity on the north flank yesterday that challenged existing guard lines. Crews were working to plan contingency guard in this area. Ground crews are working in the Douglas Lake Road area to secure safe access for firefighters and structural protection units.

Airtankers were able to drop retardant on a portion of the northern flank yesterday afternoon. The BC Wildfire service will continue to re-evaluate the opportunity for airtanker support each day. Airtankers may be used to apply retardant to the fire if conditions allow.

3 helicopters will be bucketing water on to the fire today.

Additional ground crews are expected to arrive on this fire in the next few days.

There have been smoke impacts to the hydro line in the area, with multiple outages occurring due to the smoke.



The White Rock Lake Wildfire is approximately 56 kilometers northeast of Merritt.

RESOURCES:

Fire Fighters – 19 (partnering with fire departments and the RCMP)

Heavy Equipment - 34

Helicopters – 3 assigned

Structural Protection Units—1

EVACUATION ALERTS, ORDERS & AREA RESTRICTIONS:

The Thompson-Nicola Regional District (TNRD) has implemented multiple Evacuation Orders and Evacuation Alerts for properties in the area. Please contact the Thompson-Nicola Regional District for more information: <https://www.tnrd.ca/>



Southeast flank of White Rock Lake Fire (K61884) on July 23

**FIRE
DANGER
RATING**

