

# EVACUATION ALERT



**Grasshopper Mountain Fire (K60575)**

**Tuesday, June 16, 2026, 8:00 pm (20:00)**

**Tulameen, Electoral Area "H"**

## **YOU MUST BE PREPARED TO LEAVE**

**Review your personal evacuation plan**

**Pack essential items: [preparedbc.ca](https://preparedbc.ca)**

**Pre-register for Emergency Support Services: [ess.gov.bc.ca](https://ess.gov.bc.ca)**

**Sign up for Voyent Alert!: [register.voyent-alert.com](https://register.voyent-alert.com)**

An Evacuation Alert has been issued by the Regional District of Okanagan-Similkameen (RDOS) because of the potential danger to life and health due to the threat of the Grasshopper Mountain Wildfire.

The **EVACUATION ALERT** is for the following area:

- Properties west of Tulameen on Lawless Creek Road and Tulameen River Road.

This Evacuation Alert has been issued to prepare you to evacuate your premises or property should it be found necessary. Residents will be given as much advance notice as possible prior to evacuation; however, you may receive limited notice due to changing conditions.

Follow RDOS EOC web and social media channels for the latest updates and resources:  
[emergency.rdos.bc.ca](https://emergency.rdos.bc.ca)

*"Mark Pendergraft"*

---

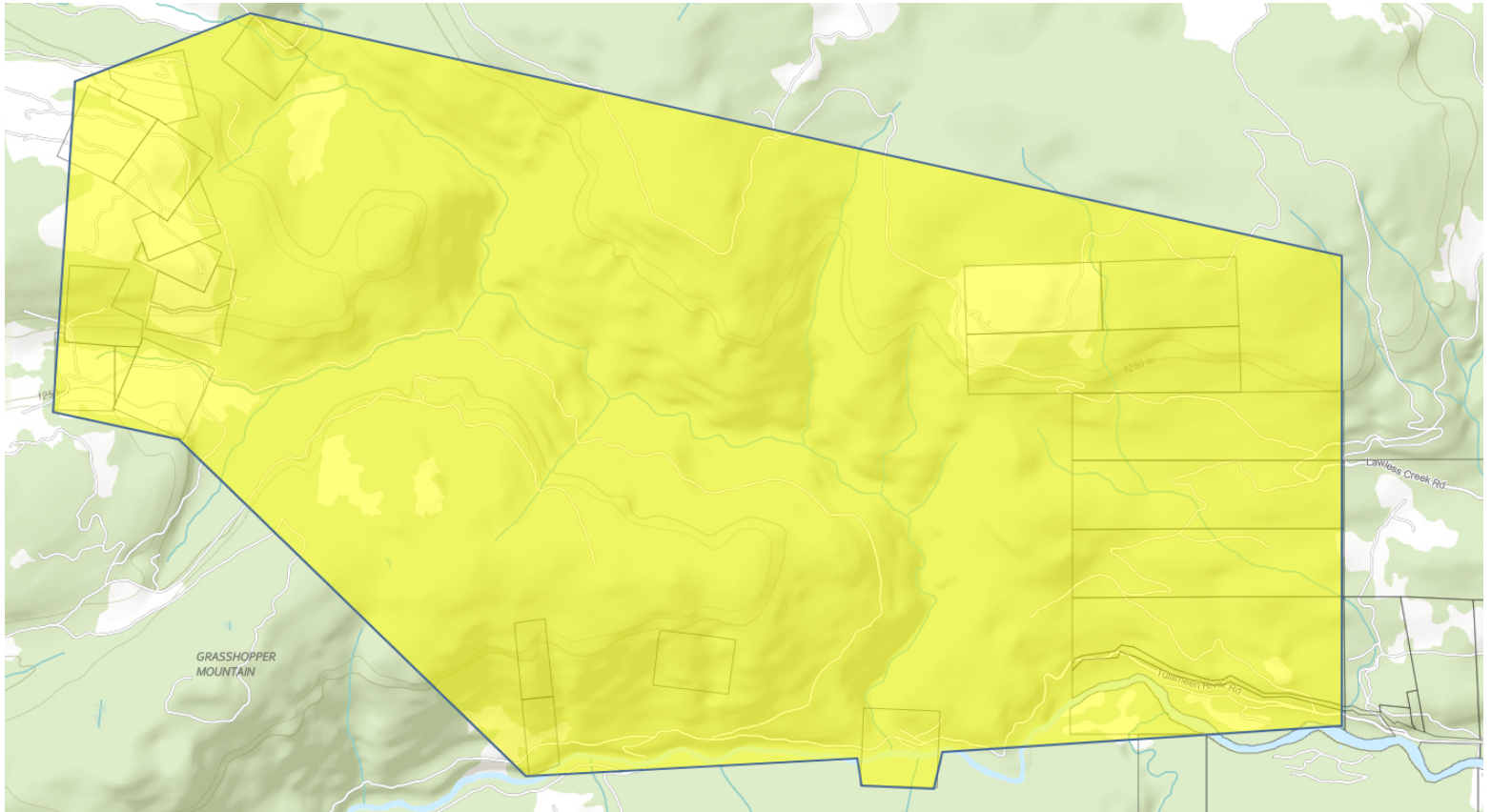
Mark Pendergraft  
Chair, Regional District of Okanagan-Similkameen

Regional District of Okanagan-Similkameen  
Facebook | X (Twitter) | YouTube  
[emergency.rdos.bc.ca](https://emergency.rdos.bc.ca)  
Information Line: 250-490-4225



*Link to Latest Updates*

# EVACUATION ALERT



Sign up for Voyent Alert!: [register.voyent-alert.com](https://register.voyent-alert.com) to receive emergency notifications via email, text, or phone. Monitor the RDOS [Emergency Operations Centre \(EOC\)](#) website and social media channels for the latest updates or call the EOC information line at 250-490-4225.

Regional District of Okanagan-Similkameen  
Facebook | X (Twitter) | YouTube  
[emergency.rdos.bc.ca](https://emergency.rdos.bc.ca)  
Information Line: 250-490-4225



*Link to Latest Updates*