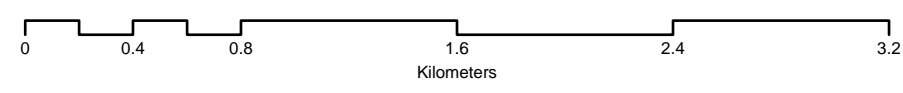


# Transportation Network

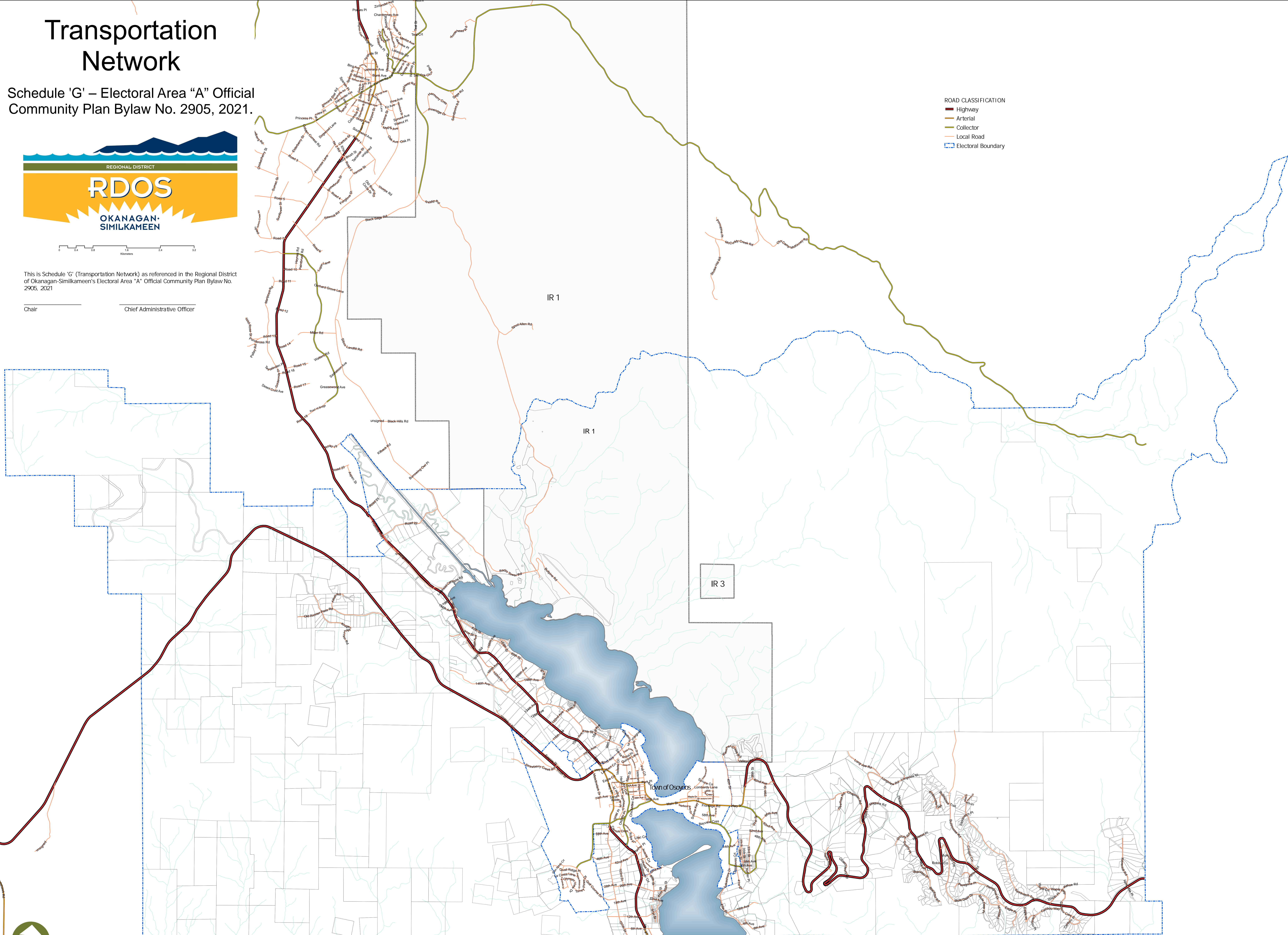
Schedule 'G' – Electoral Area "A" Official Community Plan Bylaw No. 2905, 2021.



This is Schedule 'G' (Transportation Network) as referenced in the Regional District of Okanagan-Similkameen's Electoral Area "A" Official Community Plan Bylaw No. 2905, 2021

Chair \_\_\_\_\_ Chief Administrative Officer \_\_\_\_\_

- ROAD CLASSIFICATION
- Highway
  - Arterial
  - Collector
  - Local Road
  - Electoral Boundary



1:28,000

Date: May 6, 2021