



**RDOS Area "D" Governance Study
Fact Sheets
November 2015**

SOLID WASTE MANAGEMENT

➤ What service is provided?

Solid waste management in Area "D" consists of:

- Curbside collection of single-family residential garbage, recycling and yard trimmings;
- Establishing and operating a waste transfer station for Apex residents;
- Landfill operations at OK Falls Landfill and Campbell Mountain Landfill;
- Solid waste management planning;
- Clean-up of illegal dumping sites.

Curbside Collection

In Area D, curbside collection from single-family residences includes:

- Weekly garbage pick-up of 2 cans or bags;
- Unlimited recycling pick-up every 2 weeks;
- Yard waste (grass clippings, trimmings, etc.) pick-up every 2 weeks (with the exception of a portion of Green Mountain Road which receives monthly collection), but no collection in December – February;
- One day per year that large items such as appliances and furniture are collected;
- Additional garbage (over 2-can limit) can be collected by purchasing "tag-a-bag" stickers.

Multi-family (anything over four units) residential and non-residential uses must contract their own garbage and recycling service separately, and do not receive this service through the Regional District of Okanagan-Similkameen.

Apex Waste Transfer Station

Apex is the only residential community in Area "D" that does not receive curbside garbage and recycling collection. The solid waste management plan, adopted in 2012, identified the need for a transfer station in Apex. There has been a service established to construct a waste transfer station at Apex for residents. The RDOS is still in

negotiations regarding the location and design of the station.

Landfill Operation

Two of the 7 landfills in the region service residents in Area "D" – Campbell Mountain and Okanagan Falls. The Okanagan Falls Landfill does not accept household garbage; instead it is a regional centre for demolition, land clearing and construction waste, and also accepts materials such as wood, yard waste, metals, propane tanks, tires and lead acid batteries. The Okanagan Falls Landfill has the only demolition sort facility in the interior of BC. The waste collected in Area "D" through the curbside program, commercial collection or multi-family collection is disposed at the Campbell Mountain Landfill.

Solid Waste Management Planning

The RDOS provides solid waste management planning for the entire region, including Electoral Area D. Solid waste planning includes preparation and update of the region's solid waste plan (adopted in 2012). The plan is mandatory for all regional districts, and provides a long-term vision for solid waste management, including waste diversion targets and disposal plans. The service also includes public education, waste reduction coordination, annual reporting, preparation of new waste facility sites, and other works or services as required by the plan. Some of the region's plans include working toward a regional composting facility and curbside food waste collection. Food waste collection is scheduled to begin July 2018.

Illegal Dumping

The RDOS responds to complaints about dumping on public or Crown lands throughout the entire region.

➤ Who makes decisions?

Operational decisions on the individual solid waste services are made as follows:

- Curbside collection is provided to 7 electoral areas and the Village of Keremeos. Operational decisions are made by all by those 7 service participants;
- Decisions for the Apex Waste Transfer Station service are made by the entire RDOS Board;
- The 5 electoral areas and 2 municipalities are serviced by Campbell Mountain and OK Falls landfill, and those 7 participants make operational decisions regarding the landfill operations;
- The RDOS’s full Board of Directors (18 directors) makes decisions for the region-wide solid waste management planning and illegal dumping functions.

All decisions on budget matters, financial plan, regulatory bylaws or borrowing are made by the full Board of Directors (18 directors).

➤ **Who delivers the service?**

Curbside Collection

Residential garbage and recycling collection services are delivered by Progressive Waste Solutions on contract with RDOS. The current contract is scheduled to end in the middle of 2016, but has the potential to be extended by up to two years.

Apex Waste Transfer Station, Landfill Operations and Solid Waste Planning

The RDOS staff oversee the landfill operations, Apex waste transfer station service, and provide regional solid waste planning to the entire region. The Region is required to complete and update its regional Solid Waste Management Plan, and to undertake long-term solid waste facility planning on behalf of the region. The regional service, including operation of the 4 regional landfills, is provided by 3 full-time staff, plus 2 full-time and 3 part-time staff who operate scales at the landfills. Heavy equipment operation at the landfills is contracted out to SSG at Campbell Mountain and Wildstone Engineering at the Okanagan Falls landfill through 5-year contracts.

Illegal Dumping

Illegal dumping is addressed by either staff or contractors depending on the availability of staff resources.

➤ **What is spent by RDOS on the service?**

The total cost of solid waste management services that impact Area “D” are shown in Figure 1, and can be broken down into:

- 2015 budgeted cost of garbage collection and recycling services (in 2 service areas – see Figure 3 for map);
- estimated first year budget of the Apex Waste Transfer Station;
- 2015 budgeted cost of operating the Campbell Mountain and Okanagan Falls Landfill (total is for all 7 participating electoral areas and municipalities);
- 2015 budgeted cost of the RDOS solid waste management planning service (total is for entire region);
- 2015 budgeted cost of the illegal dumping service (total is for entire region).

The amounts in Figure 1 represent the total cost of these services, and not the portion that Area “D” residences pay for through user fees or taxes.

Service Component	Cost ¹
Curbside Collection Area D ²	\$245,469
Curbside Collection Area D/E/F ²	\$483,562
Apex Waste Transfer Station ³	\$287,000
Campbell Mt. & OK Falls Landfill Operations	\$3,585,715
Solid Waste Management Planning ⁴	\$302,276
Illegal Dumping	\$16,050
Total	\$4,920,072

1 Cost estimates are from adopted 2015 budget figures
 2 Service areas are shown on Figure 3 map
 3 2015 was estimated at a higher than usual cost for this service due to the construction of a waste transfer station. Estimated cost in subsequent years is approximately \$97,000.
 4 2015 represents an unusual year for this service due to the development of a regional composting site. Service costs are typically budgeted at approximately \$160,000.

In addition to the service costs, there are also operating reserve accounts created for most of the

services, and others require capital reserves as well. It is useful to consider the amounts that the region has set aside for future expenditures. Reserve totals are included in Figure 2.

Service	Reserve Total¹
Curbside Collection Area D	\$96,879
Curbside Collection Area D/E/F	\$149,826
Campbell Mt. Landfill Capital	\$577,689
Campbell Mt. Environmental Impairment	\$1,012,086
Campbell Mt. Landfill Closure	\$5,614,536
OK Falls Landfill	\$18,789

¹ Reserve totals are as at the end of 2014.

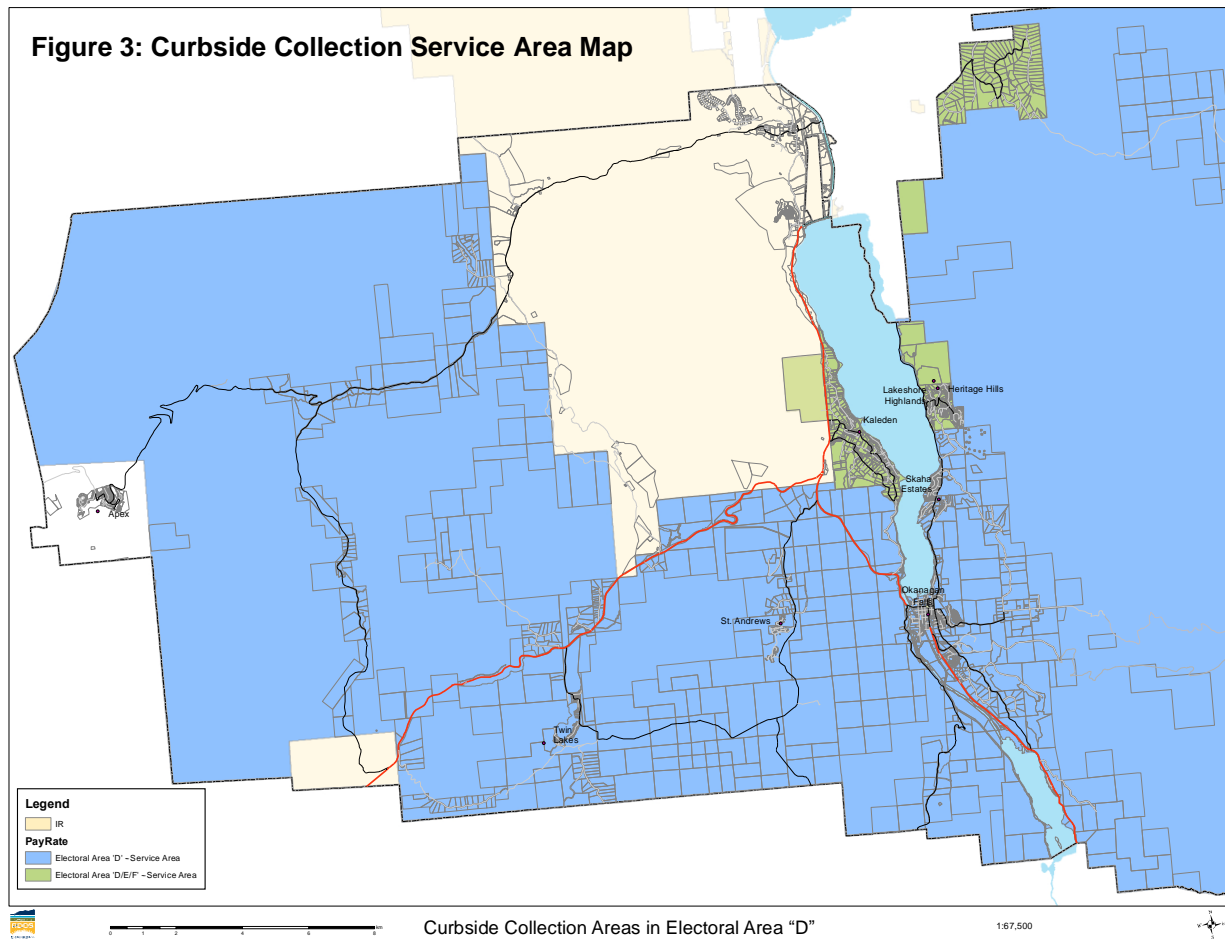
Notably, the Campbell Mountain landfill has multiple reserves. Closure costs must cover the costs of closing the landfill, as well as post-closure

care for an estimated 25 years. The total estimate of closure costs, including establishing a replacement landfill, is about \$67 million. The earliest closure date is estimated at 2043.

➤ **How are the costs recovered?**

Curbside Collection

Curbside collection of garbage and recycling in Area “D” is paid for primarily through user fees, as well as a contribution from Multi-Materials BC, a non-profit industry-funded group that manages packaging and paper recycling. In 2015, user fees were \$145 in Upper Carmi, Heritage Hills, Lakeshore Highlands and Kaleden, and \$110 in the remaining areas of Area D. Those fees are a flat rate per residence, and do not fluctuate with the value of a home. Rates are reviewed and revised annually based on costs of the contract, tipping fees and administrative costs. Residential homes are billed annually for garbage and recycling fees, and these fees are therefore not included on their tax bills. Notably the collection services do have



the option to raise revenues through taxation but they have not used this option.

Apex Waste Transfer Station

The Apex Waste Transfer Station is a new service established to pay for a waste transfer station in the Apex community. The RDOS is still in negotiations so the exact cost or how it will be recovered (through taxes or user fees) has yet to be determined. A previously estimate of the cost was approximately \$140 per residence; this rate may vary depending on whether it a user fee or property tax is used.

Landfill Operations

The cost of operating the Campbell Mountain and Okanagan Falls Landfill is currently recovered through tipping fees and user fees for the landfill. Refuse charges at the Campbell Mountain are set at \$95 per tonne per load, with a minimum charge of \$5, and are paid at the time of drop-off. Other types of waste have specific charges. Yard and garden waste, as well as residential recycling materials are free to drop off (up to 500 kg). As with the curbside collection, the service does have the ability to raise revenues through taxes, but this approach is not currently used.

Solid Waste Management Planning

The cost of the solid waste planning service is shared equally throughout the region, and the costs are raised primarily through property taxes. The cost of the service is allocated to each electoral area and municipality on the basis of converted assessment for land and improvements. The budgeted amount for 2015 was approximately \$12,129 for Area “D” or \$0.008 per \$1,000 of assessed value.

➤ **What is the cost to a typical residence?**

The net cost of the RDOS solid waste service is recovered from Area “D” taxpayers on the basis of property assessments, as well as through user fees. A residence assessed at \$325,000 paid approximately \$2.75 in taxes 2015 for the solid waste planning and illegal dumping functions, as shown in Figure 4, in addition to a flat user fee ranging from \$110 to \$140 for garbage and recycling collection (depending on the area), regardless of assessed value or volume of garbage or recycling. The exception is if you have more than the permitted amount of garbage, in which case you need to purchase additional “tag-a-bag” stickers at \$1.50 per sticker. Likewise, landfills are paid for only by those who use them.

**Figure 4
Cost Impact on Typical Residence
2015**

Service	Tax Req. ¹	Res. Rate	Owing ²
Curbside Area D ³			\$110
Curbside Area D/E/F ³			\$145
Apex Waste Transfer			n/a
Landfill Operations			n/a
SW Mgmt. Planning	\$137,276	0.008	\$2.60
Illegal Dumping	\$8,050	0.0005	\$0.15
Total			\$112.60 - \$147.60

1 Tax requisition amount excludes 5.25% Surveyor of Taxes fee
 2 Impact is calculated on a home assessed at \$325,000
 3 Service areas are shown on Figure 3 map