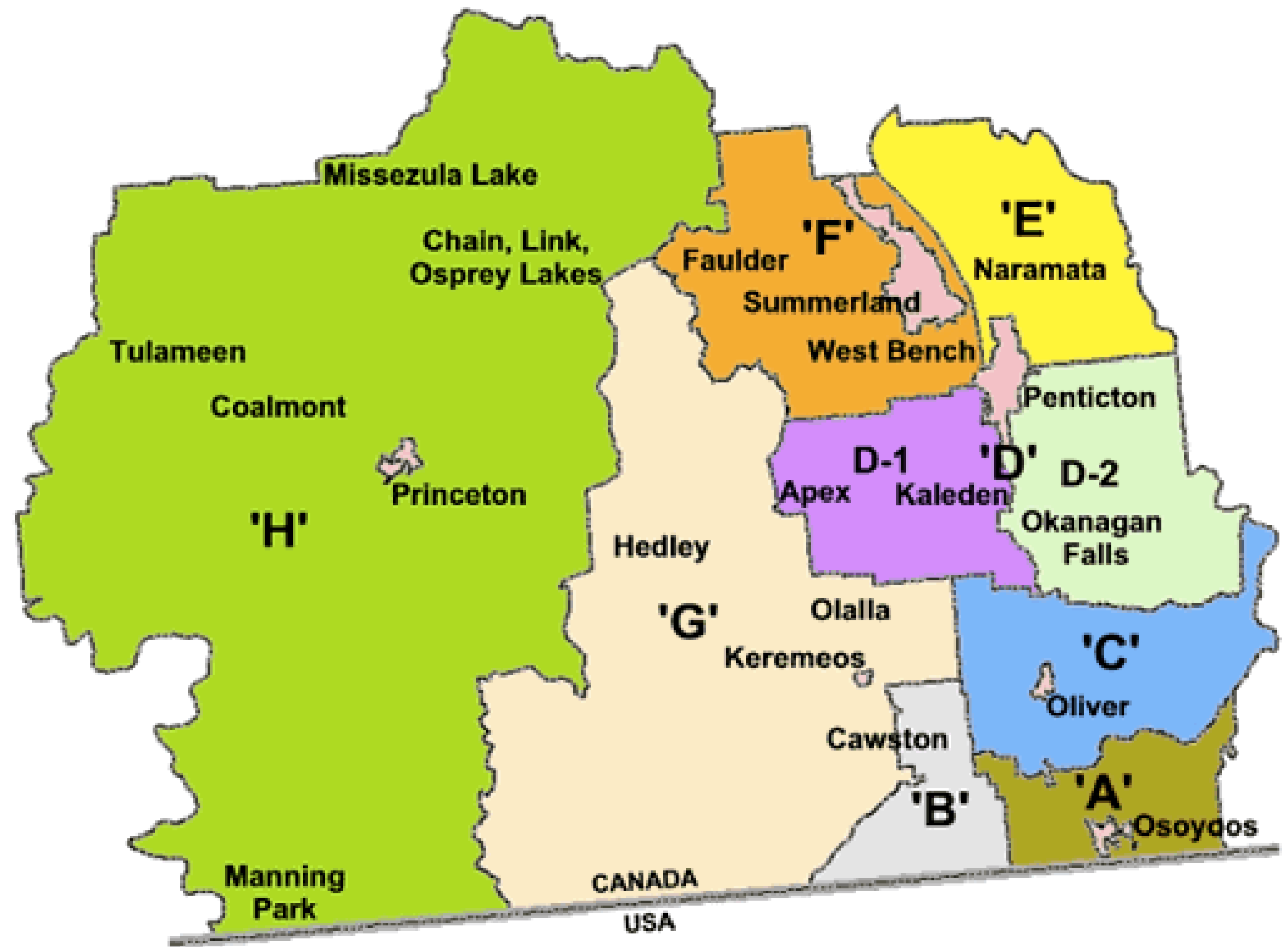


What role does Area “D” play on the Regional Board?

What electoral areas and municipalities are in the Region?

The Regional District of Okanagan-Similkameen is made up of:

- 8 electoral areas
 - A, B, C, D, E, F, G and H
- 6 municipalities
 - Penticton
 - Summerland
 - Oliver
 - Osoyoos
 - Keremeos
 - Princeton

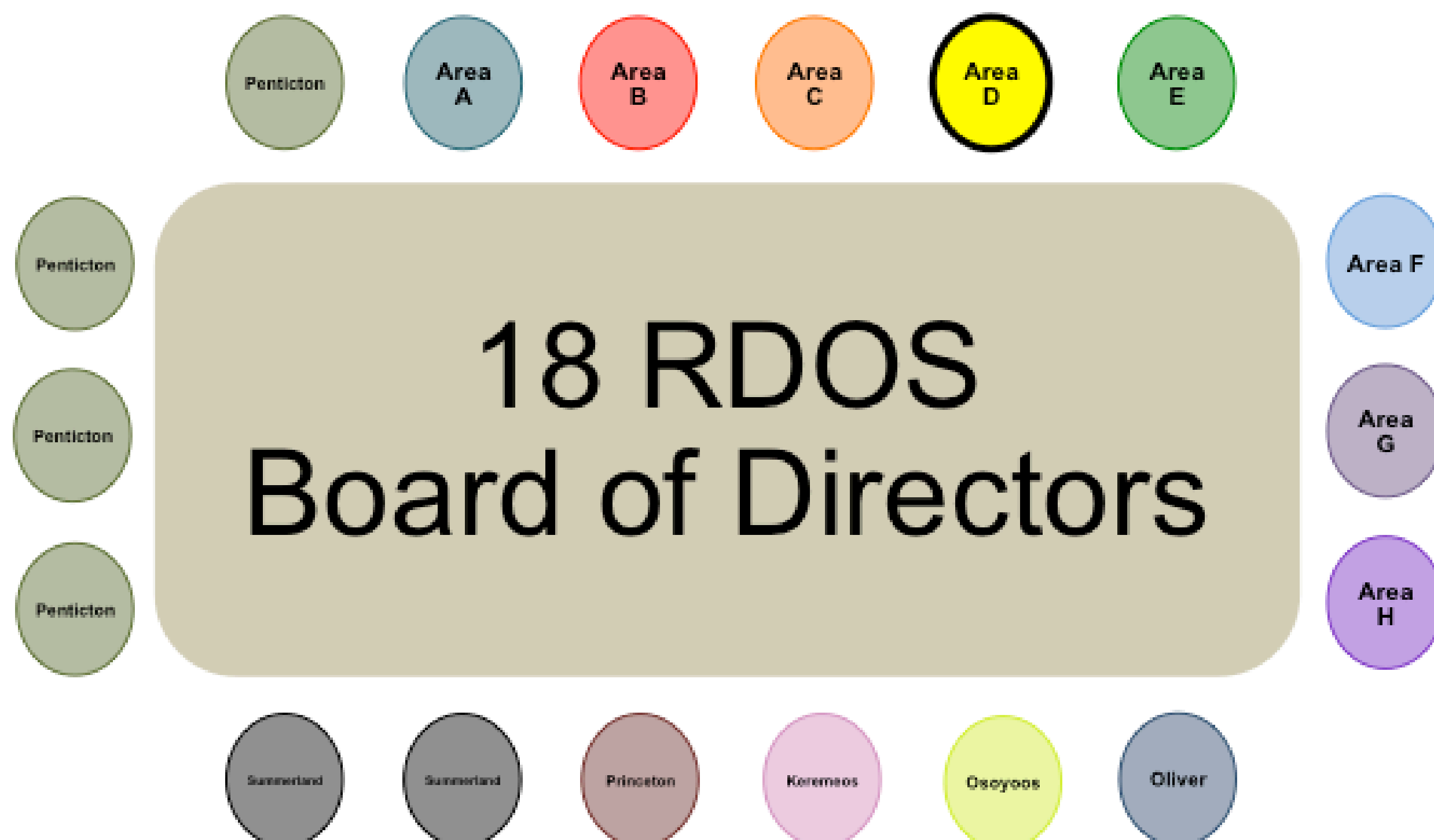


Who is on the RDOS Board of Directors?

The RDOS Board of Directors is made up of

- 8 electoral area directors
 - elected by voters in each electoral area
- 10 municipal directors
 - appointed by local Councils to the Board

The number of directors relates to area population. Oliver, Osoyoos, Keremeos and Princeton appoint 1 director each. Penticton appoints 4, and Summerland appoints 2.



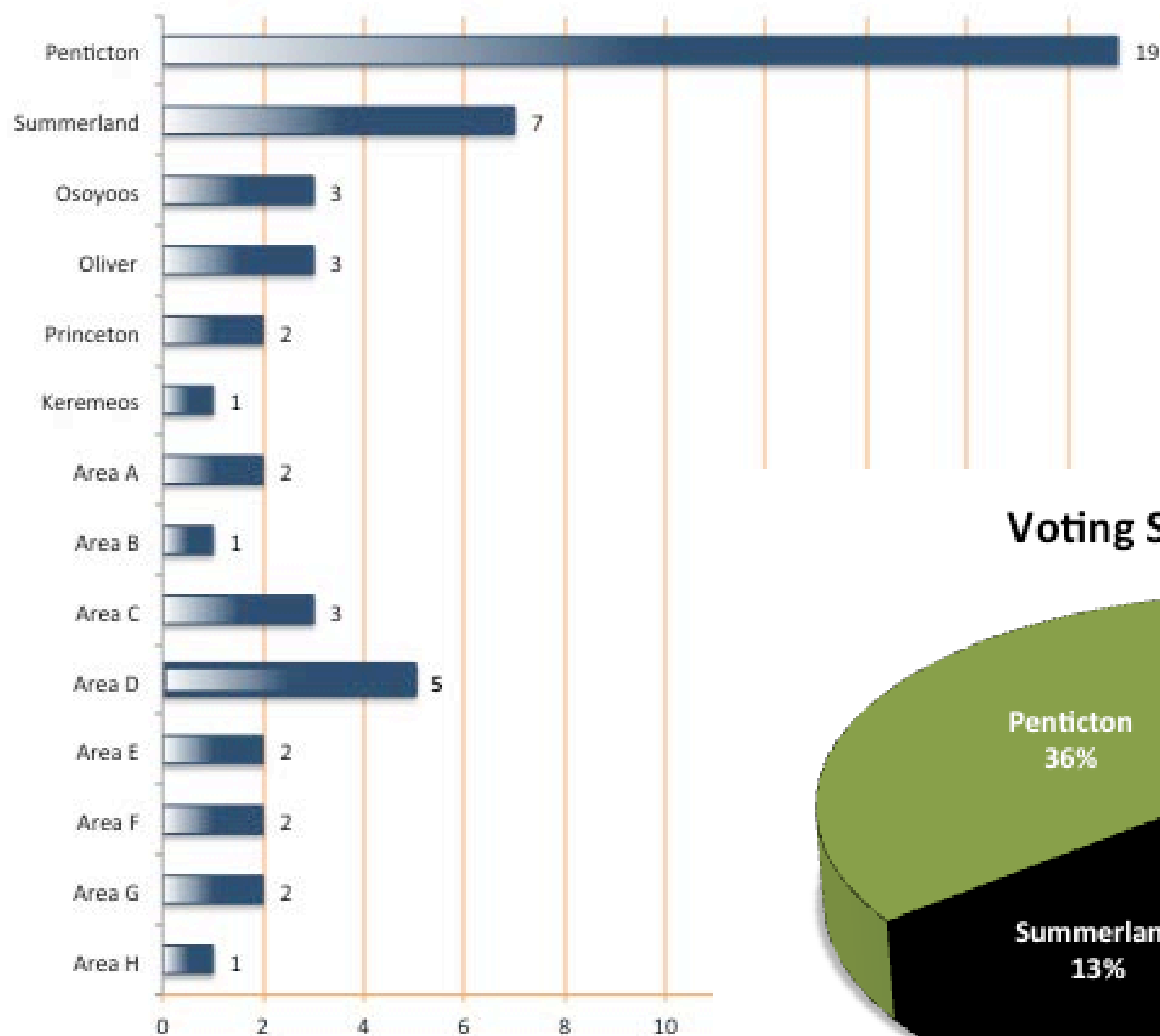
How does Area “D” have a voice in RDOS decisions?

How does RDOS Board decision-making and voting work?

Voting strength of the Directors on the Board relates to the population of the electoral area or municipality

- 1 vote for every 1,800 persons
- Some decisions are voted on by the full Board (1 director = 1 vote)
- Other decisions are made with weighted votes based on voting strength (e.g. budget, borrowing money)
- Some service decisions are made by only those directors who represent areas that participate in that service (e.g. parks and recreation)

RDOS Board Voting Strength



Voting Strength Percentage RDOS Board

