



FIRE NAME

Keremeos Creek (K50863)

FIRE SIZE:

5903 hectares (estimated)

FIRE STATUS:

Out of Control

RESOURCES:

260 wildland firefighters are assigned to this fire working with an additional 166 structural protection personnel from fire departments across BC for a total crew complement of 426 firefighters. Structure protection apparatus includes 21 fire engines and 15 water tenders.

15 helicopters and 42 pieces of heavy equipment are also assigned.

UPDATES:

Status: Overnight crews were challenged on the south flank, north of Ollala, with some spotting. They were able to action it and then conduct some hand ignitions to solidify their lines and stalled the fire at the rock bluff north of the village. There has been no fire damage on structures though the overnight period.

On the northeast flank, crews were challenged by winds in the area and are working on building contingency lines.

On Saturday, a strong upper ridge will lie over the area. Expect sunny skies with a max temperature around 26 C. Min RH's dropping to the upper teens to lower twenties. Winds light north to northeast.

Assignments: On the eastern flank, crews will be building fuel free lines from Green Mountain Road towards McKay Creek staging area. Sprinklers will be installed behind properties on Green Mountain Road. Crews will be constructing line around Hedges Butte towards McKay Creek as well as building fuel free and hand guard from McKay Creek towards Green Mountain Road.

On the western flank, crews will be using Direct Attack methods from Green Mountain Road to Keremeos Creek Forest Service Road. Heavy equipment will be used to establish contingency lines from Apex Mountain over Dividend Mountain to south Keremeos Creek. Crews will continue to establish hand lines along Olalla Creek Forest Service Road in preparation for planned ignitions. Crews have been assigned to hold the fire to the north of the Highway 3 corridor.

Night operations continue with both wildland and structural crews patrolling, mopping up where and as needed.



K50863—August 6, Green Mountain. Above Green Mountain Road with machine guard in place.

EVACUATION ALERTS AND ORDERS:

BC Wildfire Service has worked with the Regional District of Okanagan-Similkameen, Village of Keremeos, Penticton Indian Band, Lower Similkameen Indian Band and Okanagan Nation Alliance to provide information to keep residents safe.

Recommendations for Evacuation Orders and Alerts are based on current and forecasted conditions to proactively keep people safe, and so BCWS can actively work the fire. For more information about Evacuation Orders and Alerts go to: [Regional District of Okanagan-Similkameen](#), [Village of Keremeos](#), and [Penticton Indian Band](#).

ADDITIONAL CONTACT INFORMATION:

Information Officer: Marg Drysdale **Media:** Bryan Zandberg | Hours: 0800-2000

Phone: (778) 362-4872 | Email: BCWS.KeremeosCreekINFO@gov.bc.ca





FORECAST:

SYNOPSIS: A northerly flow aloft ahead of an upper ridge will give partly cloudy skies to the fire tonight. Light north to northeast winds expected. On Saturday, a strong upper ridge will lie over the area. Expect sunny skies with a max temperature around 26 C. Min RH's dropping to the upper teens to lower twenties. Winds light north to northeast. On Sunday, the strong upper ridge will persist over the area. Expect sunny skies with a high near 29 C. Min RH's dropping to the mid to upper teens. Winds light and variable with diurnal upslope and up valley winds predominating. Local gustiness during the afternoon.

Saturday: Sunny. MAX TEMP 26. MIN RH 20%.

Sunday: Sunny. MAX TEMP 29. MIN RH 17%.

Monday: Sunny. MAX TEMP 30. MIN RH 15%

OUTLOOK: The strong upper ridge will persist over the area Monday and Tuesday. Light winds should prevail with diurnal upslope and up valley flows predominating. Some downslope winds are likely overnight. Highs near 30 both days with rh's dropping to the teens. Will have to watch out for subtropical moisture arriving from the south beginning on Wednesday providing a risk of lightning.

Safety for Our Crews

We would like to ask all residents that if they are driving on **ANY** roads in the vicinity of the Keremeos Creek Wildfire to slow down. Crews and equipment are being moved using road in the area. Please slow down and stay alert!

Helpful Resources

A great resource for anyone on evacuation alert is the FireSmart's

[Last-Minute Checklist for Protecting Your Home and Property from Wildfire:](#)

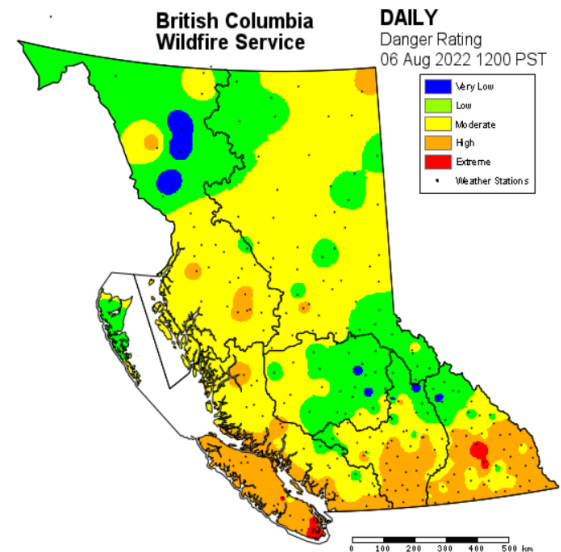


BC Wildfire App:

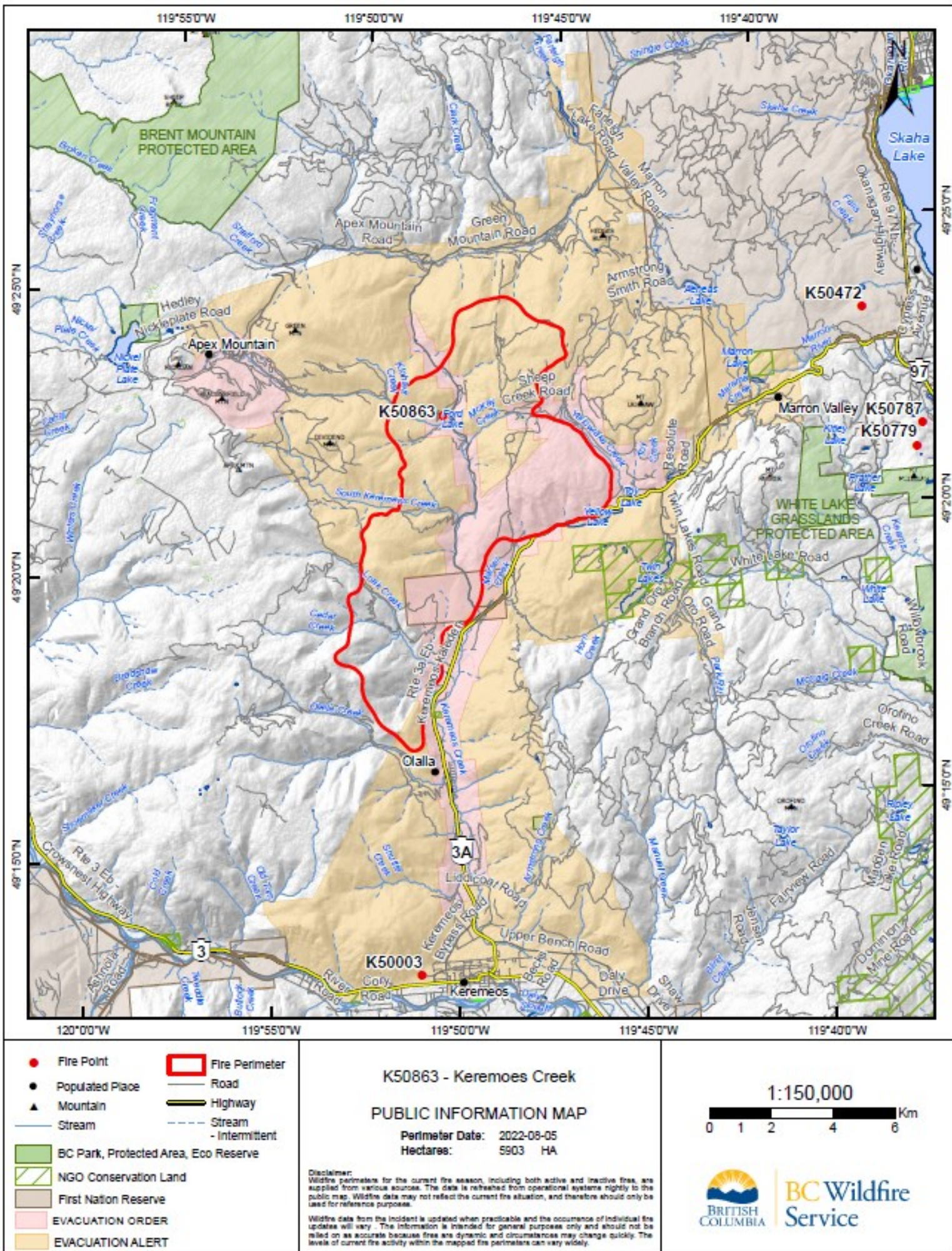
The official BC Wildfire Service mobile app is available for free download in the [App Store](#) and on [Google Play](#).

Additional information is provided in the [BCWS Mobile App Reference Guide](#).

FIRE DANGER RATING



Spot a wildfire, smoke or illegal fire activity? Call 1 800 663-5555 or *5555 on your cellphone.











HELPFUL RESOURCES:

- View an interactive map by clicking [here](#).
- **Road Closures:** DriveBC | dial 1-800-550-4997 | <https://www.drivebc.ca/>
- **Drifting Smoke:** www.bcairquality.ca/bluesky/west/index.html
- **Smoke Health Concerns:** HealthLink BC | dial 8-1-1 | www.healthlinkbc.ca/kbaltindex.asp
- For info on **Community Support Services**, click [here](#) or visit <https://www.emergencyinfobc.gov.bc.ca/>
- For **damage** to private property and Reserve Lands, please email BCWSClaims@gov.bc.ca.

ROLES AND RESPONSIBILITIES

BC Wildfire Service	Emergency Management BC	Local municipalities and regional districts	First Nations
<ul style="list-style-type: none"> - BCWS's jurisdiction covers all BC Parks, Crown and private lands, but does not include the boundaries of local governments that have forest fire prevention bylaws and are serviced by a fire department. - BCWS speaks directly about wildfires (i.e. fire status, operations, etc.) and is responsible for disseminating wildfire updates to local governments, stakeholders, First Nations and the public. - BCWS does <u>not</u> announce Strategic Evacuation Orders or Alerts. - BCWS <u>does</u> announce Tactical Evacuations. - In the event of an imminent threat to public safety, BCWS can authorize an immediate Tactical Evacuation of the affected area. 	<ul style="list-style-type: none"> - EMBC coordinates communication across all agencies and stakeholders to support communities. - EMBC provides advice to evacuees and support to communities regarding Emergency Operations Centres and Emergency Support Services. 	<ul style="list-style-type: none"> - Local Municipalities and Regional Districts speak directly about Strategic Evacuation Orders and Alerts in their respective jurisdictions. - Local Municipalities and Regional Districts <u>do not</u> speak about the status of a wildfire unless the fire occurs within their jurisdiction. For example, if a wildfire <u>starts</u> within the boundaries of a local government, BCWS will often assist the local fire department with suppression efforts. If the fire spreads into Crown land to become a wildfire, BCWS will often assume control. 	<ul style="list-style-type: none"> - On IR lands, Evacuation Orders and Alerts are implemented by a Band Council Resolution or other. - A designated person(s) from the respective First Nations community will speak to Evacuation Orders and Alerts on IR lands.

ACCESSING INFORMATION

BC Wildfire Service Online Communications	EmergencyInfoBC EMBC Online Communications	PreparednessBC EMBC Online Communications
 @BCGovFireInfo	 @EmergencyInfoBC	 @PreparedBC
 www.bcwildfire.ca	 www.emergencyinfobc.gov.bc.ca	 www.gov.bc.ca/preparedBC
 BC Wildfire Service		 PreparedBC

FIRE STAGES OF CONTROL:

Out of Control	Describes a wildfire that is not responding (or only responding on a limited basis) to suppression action, such that the perimeter spread is not being contained.
Being Held	Indicates that (with the resources currently committed to the fire) sufficient suppression action has been taken that the fire is not likely to spread beyond existing or predetermined boundaries under the prevailing and forecasted conditions.
Under Control	The fire has received sufficient suppression action to ensure no further spread of the fire.

WILDFIRE RANKS:

Rank	Description
1	<p>Characteristics: Smouldering ground fire, no open flame, white smoke, slow (i.e. creeping) rate of fire spread.</p> <p>Firefighting tactics: Direct attack with ground crews using hand tools and water delivery systems (i.e. pumps and hose).</p>
2	<p>Characteristics: Surface fire, visible, open flame, unorganised or inconsistent flame front, slow rate of spread.</p> <p>Firefighting tactics: Direct attack with ground crews using hand tools, water delivery systems, or heavy equipment. Hand constructed control lines and lines that have been cleared of combustible material will likely be successful.</p>
3	<p>Characteristics: Organised flame front – fire progressing in organised manner, occasional candling may be observed along the perimeter and/or within the fire, moderate rate of spread.</p> <p>Firefighting tactics: Hand constructed control lines alone are likely to be challenged, ground crews conducting direct attack may require air support from fixed-wing air tankers, skimmers or helicopters conducting bucketing or tanking operations. Control lines constructed by heavy equipment will generally be effective</p>
4	<p>Characteristics: Grey to black smoke, organised surface flame front, moderate to fast rate of spread on the ground, short aerial bursts through the forest canopy, short-range spotting.</p> <p>Firefighting tactics: Ground operations may not be successful at the head of the fire, indirect tactics may be required to bring the head of the fire under control. Parallel attack may be used along the flanks of the fire to direct the head into favourable ground or fuels. Air operations may be required to support ground personnel.</p>
5	<p>Characteristics: Black to copper smoke, organised crown fire front, moderate to long-range spotting and spot fire growth.</p> <p>Firefighting tactics: The limited options available include indirect attack and planned ignitions to remove fuel in the path of this type of fire behaviour. Ground operations are often restricted to fighting the least active sections of the fire or conducting ground ignition operations from secure control lines with readily available escape routes and safety zones.</p>
6	<p>Characteristics: Organised crown fire front, long-range spotting and independent spot fire growth, possible fireballs and whirls, violent fire behaviour probable, a dominant smoke column may develop which influences fire behaviour.</p> <p>Firefighting tactics: Firefighting under these conditions is extremely dangerous. Suppression efforts will be well away from active fire behaviour and may include preparing structure protection measures or conducting indirect large-scale ignition operations in an attempt to steer the fire. Often, the safest and most prudent strategy is to pull resources back to safe areas, ensure that personnel and the general public are safe, and wait for fire behaviour to lessen before re-engaging in fire suppression operations.</p>



RANK 1

RANK 2

RANK 3

RANK 4

RANK 5

RANK 6