

EMERGENCY OPERATIONS CENTRE (EOC)



EVACUATION ALERT RESCINDED – May 12, 2023 1100

Electoral Area “D” Okanagan Falls

Shuttleworth Creek in Okanagan Falls

The **EVACUATION ALERT**, pursuant to the Emergency Program Act, issued by the Regional District Okanagan-Similkameen in Electoral Area “D” adjacent to Shuttleworth Creek issued on May 5, 2023 at 1545 is **RESCINDED** for the list of properties in Schedule 1.

An Evacuation Alert may need to be reissued if conditions degrade; however, if that is deemed necessary, a notification of the Evacuation Alert or Order process will re-commence.

WHAT YOU SHOULD DO:

- Fill the gas tank of personal vehicles.
- Bring a minimum of three days of food and essential supplies (local grocery stores may not yet have adequate stock):
 - medications
 - pet supplies
- If your animals or livestock have been relocated, to coordinate their safe return call:
 - **Animal Emergency Response Team (ALERT): 250-809-7152 – Pet owners and hobby farmers**
 - **RDOS EOC: 250-490-4225 – Commercial Farmers**

Visit the RDOS EOC website for resource links and information updates:

<https://emergency.rdos.bc.ca/resources/>



Link to Latest Updates

“Mark Woods”

Mark Woods, EOC Director
Regional District of Okanagan-Similkameen

EMERGENCY OPERATIONS CENTRE (EOC)



Schedule 1 – List of Properties

5050 13TH AVE	1321 CEDAR ST	1417 MAPLE ST
4637 14TH AVE	1325 CEDAR ST	1543 MAPLE ST
4645 14TH AVE	1333 CEDAR ST	1316 MCLEAN CREEK RD
4646 14TH AVE	1337 CEDAR ST	1328 MCLEAN CREEK RD
4652 14TH AVE	1341 CEDAR ST	1348 MCLEAN CREEK RD
1253 ASH ST	1353 CEDAR ST	1356 MCLEAN CREEK RD
1257 ASH ST	4637 CHERRY CRES	4301 MCLEAN CREEK RD
1260 ASH ST	4640 CHERRY CRES	4505 MCLEAN CREEK RD
1128 BIRCH ST	4641 CHERRY CRES	4529 MCLEAN CREEK RD
1132 BIRCH ST	4644 CHERRY CRES	4620 PEACH CRES
1133 BIRCH ST	1145 HIGHWAY 97	4629 PEACH CRES
1305 BROCKIE PL	1149 HIGHWAY 97	4632 PEACH CRES
1309 BROCKIE PL	1207 HIGHWAY 97	4633 PEACH CRES
1313 BROCKIE PL	1129 MAPLE ST	5151 THIRTEENTH AVE
1321 BROCKIE PL	1132 MAPLE ST	5009 VETERANS WAY
1329 BROCKIE PL	1137 MAPLE ST	1120 WALNUT CRES
1337 BROCKIE PL	1138 MAPLE ST	4645 WALNUT CRES
1349 BROCKIE PL	1155 MAPLE ST	4653 WALNUT CRES
1353 BROCKIE PL	1161 MAPLE ST	1251 WILLOW ST
1357 BROCKIE PL	1203 MAPLE ST	1252 WILLOW ST
1361 BROCKIE PL	1205 MAPLE ST	1256 WILLOW ST
1317 CEDAR ST	1217 MAPLE ST	1320 WILLOW ST

LOT 2, BLOCK 1, PLAN KAP1280, DISTRICT LOT 374, SIMILKAMEEN DIV OF YALE LAND DISTRICT, OKANAGAN FALLS TOWNSITE

LOT 3, BLOCK 1, PLAN KAP429A, DISTRICT LOT 374, SIMILKAMEEN DIV OF YALE LAND DISTRICT, PORTION PL 1280

LOT 4, BLOCK 1, PLAN KAP429A, DISTRICT LOT 374, SIMILKAMEEN DIV OF YALE LAND DISTRICT, PORTION PL 1280

PARCEL 2, PLAN KAP1385A, DISTRICT LOT 374, SIMILKAMEEN DIV OF YALE LAND DISTRICT, PORTION L 4 BLK 1 PL 1280

PARCEL 3, PLAN KAP1385A, DISTRICT LOT 374, SIMILKAMEEN DIV OF YALE LAND DISTRICT, PORTION L 5 BLK 1 PL 1280

PARCEL 4, PLAN KAP1385A, DISTRICT LOT 10, SIMILKAMEEN DIV OF YALE LAND DISTRICT, PORTION BLK C PL B627

PARCEL A, BLOCK 2, PLAN KAP9858A, DISTRICT LOT 374, SIMILKAMEEN DIV OF YALE LAND DISTRICT, PORTION L 3 PL 1280

PARCEL A, PLAN KAP1385A, DISTRICT LOT 374, SIMILKAMEEN DIV OF YALE LAND DISTRICT, PORTION L 5 BLK 1 PL 1280

SIMILKAMEEN DIV OF YALE LAND DISTRICT, COVERING THAT PT OF PCL 2 (A1385) L4 BLK 1 & THAT PT OF PCL 3 (A1385) L5 BLK 1 BOTH OF DL 374 PL 1280 TOGETHER WITH THAT PT BLK C (B627) OF DL 10 SHOWN AS PCL 4 ON A1385 FOR COMMUNITY TRAIL PURPOSES, LEASE/PERMIT/LICENCE # 347132

Follow RDOS on [Facebook](#) [Twitter](#) [YouTube](#) [Linkedin](#)

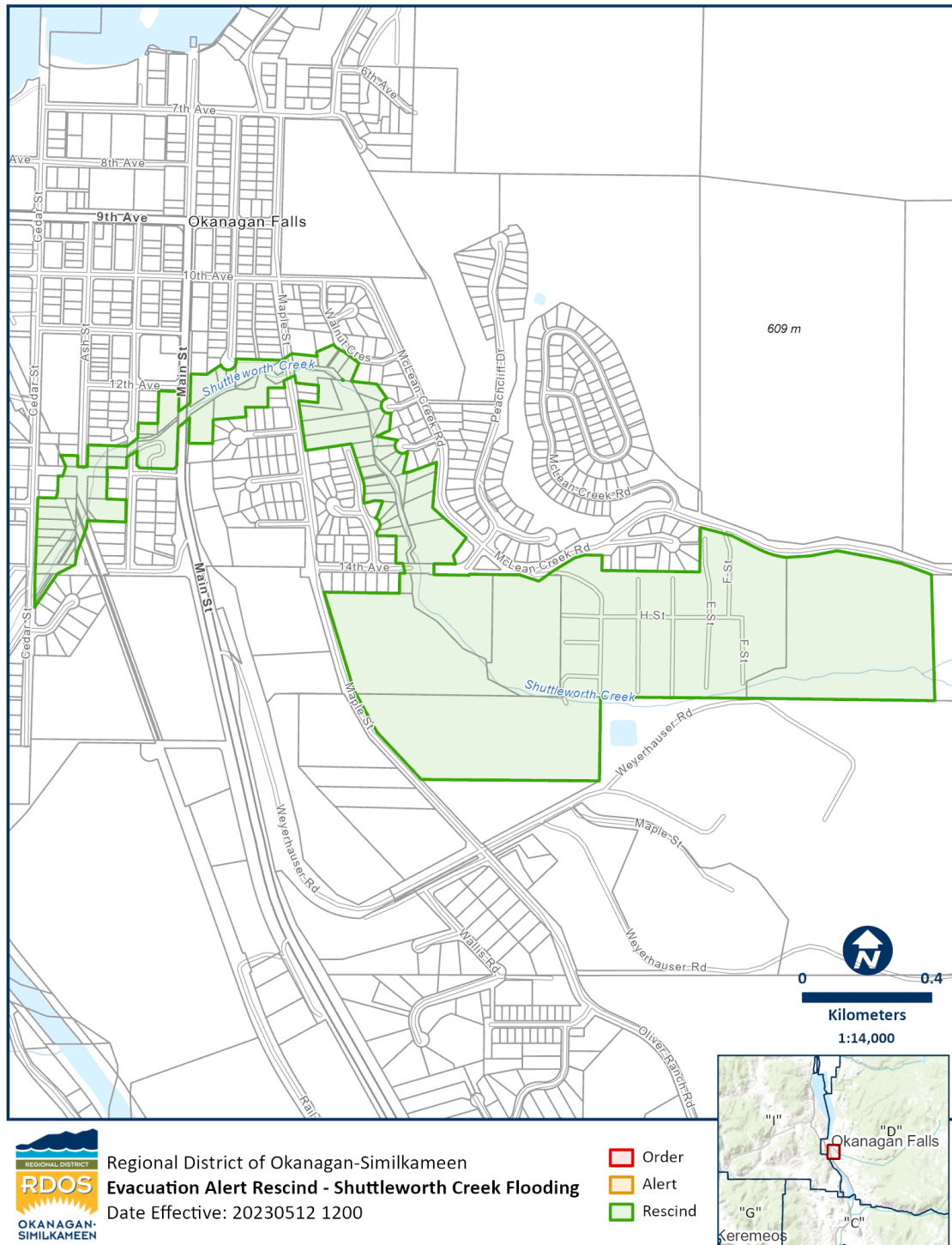
Website: emergency.rdos.bc.ca Email: eocinfo@rdos.bc.ca Phone: 250-490-4225

[Voyent Alert!](#) notifications – sign up for routine and emergency notifications

Issued by Director of RDOS EOC

EMERGENCY OPERATIONS CENTRE (EOC)

Schedule 2 – Map of Properties



Follow RDOS on [Facebook](#) [Twitter](#) [YouTube](#) [LinkedIn](#)

Website: emergency.rdos.bc.ca Email: eocinfo@rdos.bc.ca Phone: 250-490-4225

Voyent Alert! notifications – sign up for routine and emergency notifications

Issued by Director of RDOS EOC