

EMERGENCY OPERATIONS CENTRE (EOC)



EVACUATION ORDER August 4, 2022, 1200 hrs.

Olalla west and south

Pursuant to Section 13 (1) of the BC Emergency Program Act an **Evacuation Order** has been issued by Regional District of Okanagan-Similkameen to protect the health, safety or welfare of a person or to limit damage to property due to: The Keremeos Creek Wildfire.

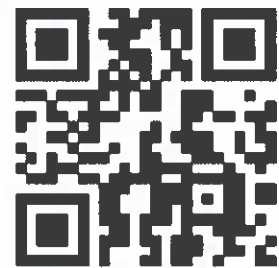
Members of the RCMP and other agencies under the direction of RCMP will be expediting this action.

The **Evacuation Order** is in effect for the following areas:

- West side of Highway 3A in Olalla
- South of Olalla

Visit the RDOS EOC website for resource links and information updates:

<https://emergency.rdos.bc.ca/resources/>



Link to Latest Updates



Jim Zaffino, EOC Director
Regional District of Okanagan-Similkameen

Schedule 1 – List of Properties

| | | |
|-----------------|-----------------|-----------------|
| 1292 HIGHWAY 3A | 1438 HIGHWAY 3A | 1480 HIGHWAY 3A |
| 1340 HIGHWAY 3A | 1444 HIGHWAY 3A | 1482 HIGHWAY 3A |
| 1344 HIGHWAY 3A | 1452 HIGHWAY 3A | 1484 HIGHWAY 3A |
| 1348 HIGHWAY 3A | 1454 HIGHWAY 3A | 1486 HIGHWAY 3A |
| 1395 HIGHWAY 3A | 1456 HIGHWAY 3A | 1488 HIGHWAY 3A |
| 1416 HIGHWAY 3A | 1460 HIGHWAY 3A | 1490 HIGHWAY 3A |
| 1418 HIGHWAY 3A | 1462 HIGHWAY 3A | 1498 HIGHWAY 3A |
| 1420 HIGHWAY 3A | 1464 HIGHWAY 3A | 1502 HIGHWAY 3A |
| 1422 HIGHWAY 3A | 1468 HIGHWAY 3A | 1506 HIGHWAY 3A |
| 1424 HIGHWAY 3A | 1470 HIGHWAY 3A | 1510 HIGHWAY 3A |
| 1430 HIGHWAY 3A | 1472 HIGHWAY 3A | 1514 HIGHWAY 3A |
| 1432 HIGHWAY 3A | 1474 HIGHWAY 3A | 1518 HIGHWAY 3A |
| 1434 HIGHWAY 3A | 1476 HIGHWAY 3A | 1675 HIGHWAY 3A |
| 1436 HIGHWAY 3A | 1478 HIGHWAY 3A | |

YOU MUST LEAVE THE AREA IMMEDIATELY

Follow RDOS on Facebook Twitter YouTube LinkedIn

Website: emergency.rdos.bc.ca Email: eocinfo@rdos.bc.ca Phone: 250-490-4225

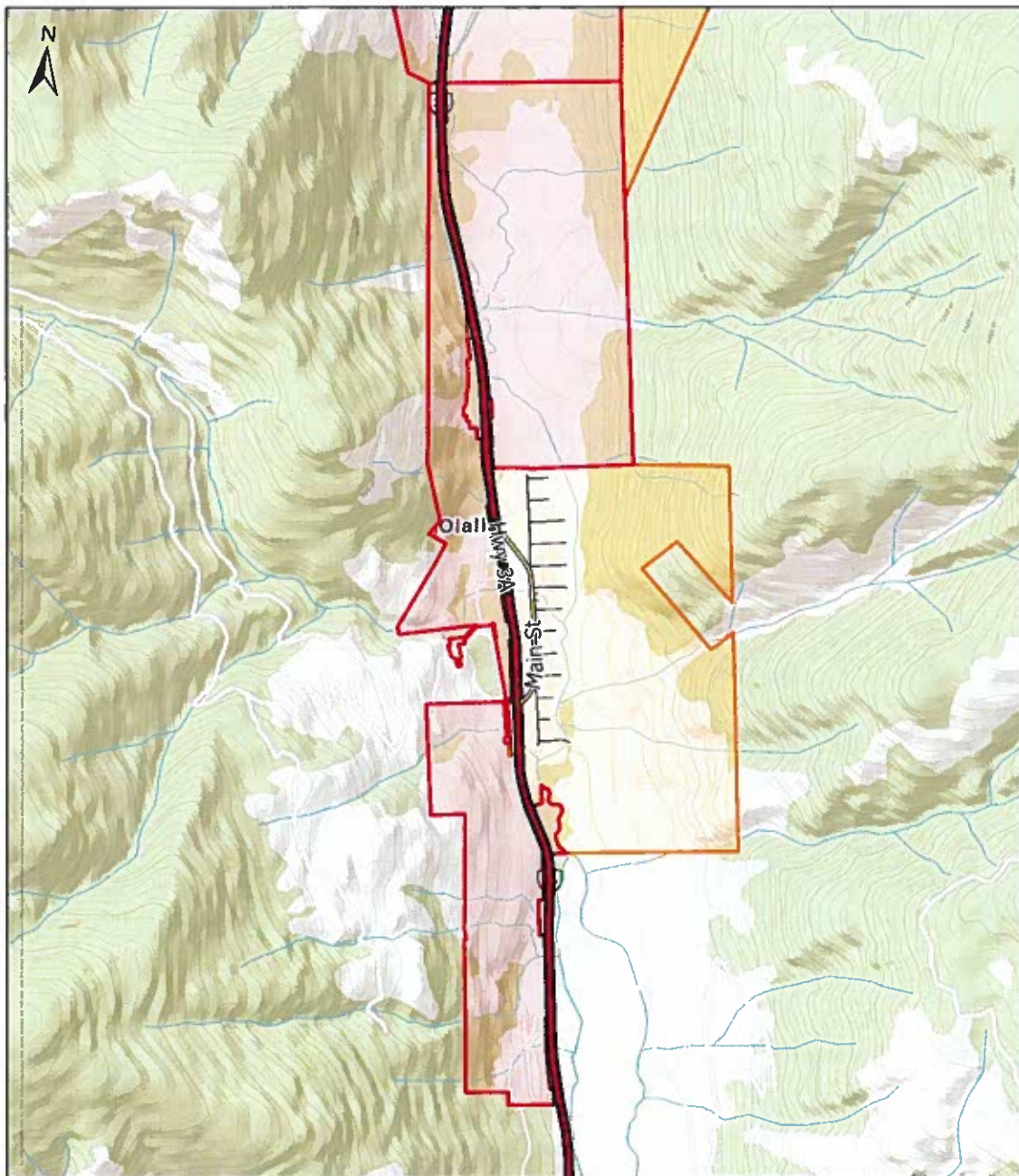
[Voyent Alert!](#) notifications – sign up for routine and emergency notifications

Issued by Director of RDOS EOC

EMERGENCY OPERATIONS CENTRE (EOC)



Schedule 2 - Evacuation Order Map



Evacuations

- Order
- Alert
- Rescind

Fire: K50863
Keremeos Creek wildfire
Evacuation Order
Olalla West and South
08/04/2022 @ 1200



Follow RDOS on Facebook Twitter YouTube LinkedIn
Website: emergency.rdos.bc.ca Email: eocinfo@rdos.bc.ca Phone: 250-490-4225
[Voyent Alert!](#) notifications – sign up for routine and emergency notifications
Issued by Director of RDOS EOC

EMERGENCY OPERATIONS CENTRE (EOC)

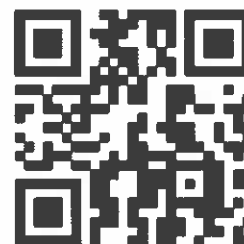


WHAT YOU SHOULD DO:

- You must leave the area **immediately**.
- Follow directions of emergency responders and travel designated or safest route available.
- Register online at ess.gov.bc.ca
- A reception centre is set up at **Princess Margaret Secondary, 120 Green Ave, Penticton** if you require immediate assistance
 - Hours: 8am -5pm
 - Due to a shortage of commercial/hotel accommodation, consider making arrangements to stay with family or friends if possible.
 - Take pets with you if you can.
 - **To access Emergency Support Services (ESS), call 250-486-1890**
- If you need transportation assistance, call **RDOS EOC: 250-490-4225**
- Gather your family; if you have room, take a neighbor or someone needing transportation.
 - Do not use more vehicles than you have to.
- Do not turn off your natural gas. FortisBC will turn off natural gas service as needed.
- Store your Firearms in accordance with Section 118 of the Firearms Act.
- Close all windows and doors.
- Close gates (latch) but do not lock.

WHAT TO TAKE:

- Critical items only if they are immediately available:
 - government-issued ID
 - medications
 - eyeglasses
 - valuable papers (e.g. insurance, credit, and mortgage information)
 - immediate care needs for dependents
- Pets in pet kennels or on leash.
 - **Pet owners and hobby farmers** with concerns for their animals *may* contact:
 - **Animal Emergency Response Team (ALERT): 250-809-7152**
 - **Commercial Farmers** who require assistance *may* contact:
 - **RDOS EOC: 250-490-4225**



[Link to Latest Updates](#)

YOU MUST LEAVE THE AREA IMMEDIATELY

At the Reception Centre – Emergency Support Service (ESS) volunteers are able to assist you to meet your basic needs by providing service for up to 72 hours. This may include coordinating food, clothing, lodging and transportation.

- If you are not able to attend the reception center and require support, call **250-486-1890**.
- An ESS volunteer will return your call.

ESS is a safety net program available when alternatives such as family, friends, and insurance cannot be accessed. ESS is not offered if insurance is accessible. In situations where insurance exists, but cannot be immediately accessed, interim support may be provided.