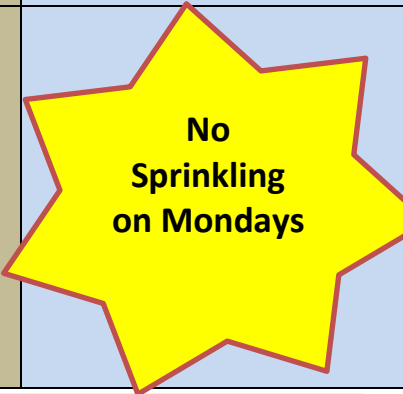


RESIDENTIAL WATERING RESTRICTIONS FOR SYSTEM USERS STAGE NORMAL

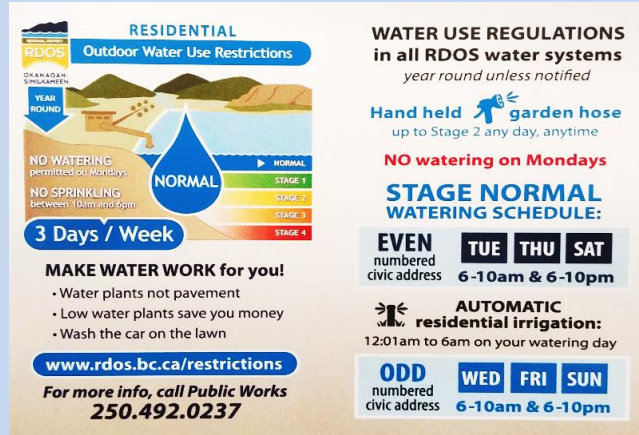
The Regional District reminds residents that **Stage Normal** watering restrictions are in effect year-round or until situations change.

Even numbered civic addresses → Tuesday, Thursday and Saturday
Odd numbered civic addresses → Wednesday, Friday, and Sunday

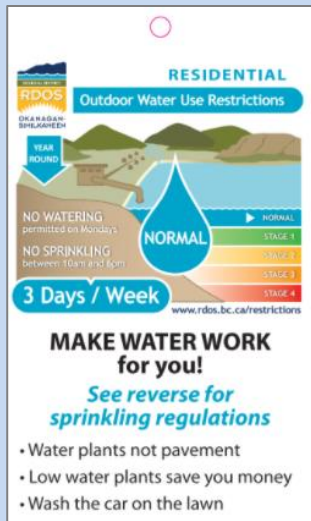
Watering Established Lawns, Shrubs/Flowers	Newly Planted Sod, Trees or Flowering Shrubs	Outdoor Cleaning	Topping Up/ refilling Pools, Hot Tubs, Ponds or Water Features
<p><u>Manual Sprinklers</u></p> <p>3 days per week</p> <p>6:00 AM to 10:00 AM</p> <p>6:00 PM to 10:00 PM</p> <p>On your watering day</p>	<p><u>Seeded lawns or turf:</u></p> <p>- Any day at any time using any method for the first 49 days after installation of seeded lawns.</p>	<p><u>Driveways, sidewalks patios and decks:</u></p> <p>Any day, using any method provided it does not result in *Excess Water Use</p> <p><i>It is suggested to use a broom, or hose with spring loaded shut off nozzle</i></p>	<p>Any day at any time for volumes under 4,000 litres</p> <p>Note: for volumes above 40,000 litres, 24 hour notice must be provided to the RDOS</p>
<p><u>Automated irrigation systems</u></p> <p>12:01 AM to 6:00 AM</p> <p>On your watering day</p>	<p><u>Trees and flowering shrubs:</u></p> <p>- Any day at any time using any method for 21 days after planting of new trees and flowering shrubs. Stage 1 restriction are required after 21 days</p>	<p>* Excess water use is defined as applying more water than is required to provide a service, produce a product, or complete a task</p>	
<p>Hand watering of flower and vegetable gardens is allowed daily.</p>	<p>Stage 'Normal' represents normal conditions for the local area and your water system. Water Restriction Stages are important to conserve water, minimize pumping costs and maintain adequate volumes (flow) for fighting fire.</p>		

**The RDOS has created two, helpful items
to make it easy to follow residential sprinkling regulations**

The 4" x 6" magnet can be placed on a fridge or any metal surface like a filing cabinet or even some exterior doors. Place the magnet where it will cue occupants to adhere to sprinkling regulations and if applicable, to insure automatic timers are set correctly.



The 2" x 3" plastic reminder is for the most used outdoor faucet, where the hose attaches – known as a hose-bib. The envelope will contain a zap-strap to help secure it to the shaft of the faucet.



**Regional District of Okanagan-Similkameen
Public Works Department
June 2022**

PUBLIC WORKS CONTACT INFORMATION:		
Public Works General	Phone: 250-490-4135	Email: publicworkds@rdos.bc.ca
Water Quality	Phone: 250-490-4106	
After-Hours Emergency Call Regional Dispatch	Phone: 250-490-4141	