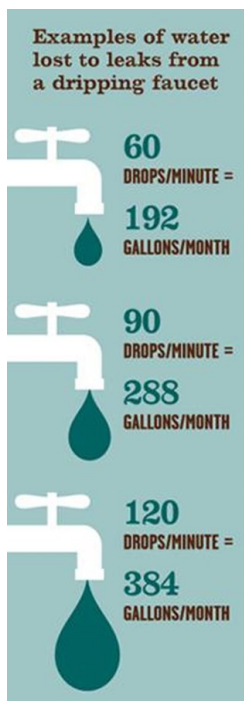


### Water Supply Lines, Valves and Corrosion:

Water-using devices can leak and cause damage to walls and floors, potentially creating an environment for mold or mildew. Look for continuous leaks in supply lines, fittings and valves. Also, look for leaks caused by corrosion, such as a rusty water heater bottom. Leaks may be intermittent, meaning they only occur when a water-using device is in operation. Run water-using devices, such as a clothes washer or dishwasher, to see if a leak occurs while running.

**Look and listen** for running or dripping water:

- Refrigerators with ice makers and /or water dispensers
  - Humidifiers
  - Water softeners
  - Clothes washers
  - Icemakers
  - Reverse osmosis (RO) systems
  - Dishwashers
  - Water heaters
- Any other water-using device



**Don't wait for this to happen...  
Seek the leak!**

For more information on water meters, leak detection and water conservation techniques visit the RDOS web site:  
<http://www.rdos.bc.ca/departments/public-works/water-systems/water-conservation/>

Water meters—<http://www.rdos.bc.ca/departments/public-works/water-systems/water-metering/>

**Contact: Public Works Projects Coordinator  
Zoe Kirk, [zkirk@rdos.bc.ca](mailto:zkirk@rdos.bc.ca) 250-490-4110**

Cross Connection Control Program: <http://www.rdos.bc.ca/departments/public-works/water-systems/water-quality/cross-connections/>  
**Contact RDOS Environmental Technician,  
Rob Palmer, [rpalmer@rdos.bc.ca](mailto:rpalmer@rdos.bc.ca) 250-490-4106**

**Regional District of Okanagan-Similkameen  
101 Martin St.  
Penticton, BC  
T: 250.492.0237 F: 250.492.0063  
TF (BC/Alta): 1.877.610.3737  
E: [info@rdos.bc.ca](mailto:info@rdos.bc.ca)**

**RDOS  
Public Works**

## Indoor Water Leaks?

### How to detect and fix leaks



## Toilets:

Toilet leaks are among the most common type of leak found inside the home. Because this type of leak can be silent, it may go unnoticed. Understanding the basic mechanics of your toilet can save you thousands of cubic meters or gallons of water per year.

**You can perform a toilet dye test:** you can obtain dye tabs from the RDOS.

Lift the tank cover and place the dye tablet or a few drops of food coloring into the tank. Wait 15 minutes (do not use the toilet). If the color appears in the toilet bowl, you have a leak.

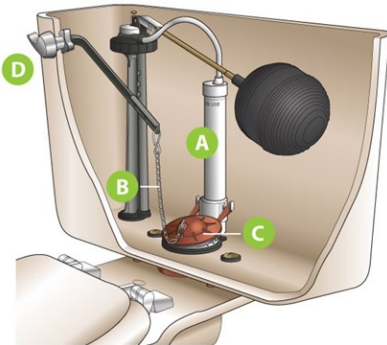
### If you have a leak, check:

**A. Overflow Tube:** Water should be a half-inch below the top of the tube.

**B. Lift Chain:** It should not catch on anything.

**C. Flapper:** Ensure it is seating properly and the bottom seal is not cracked. Chlorine can turn the rubber brittle over time.

**D. Flush Handle:** Make sure it functions properly, lifting the flap and allowing it to reset.



## Did You Know??

A leaking toilet can waste over 22 m<sup>3</sup> or 6,000 gallons/month.

That equates to as much as 272m<sup>3</sup> or 72,000 gallons of water per year!



## Toilet Maintenance Tips:

Consider replacing your flapper every 3-5 years, as they are prone to warping and leaking. Putting chlorine products in the tank may decrease the life of your flapper.

Turn off the water at the supply line before removing tank parts.

To help you find the right replacements, take old toilet parts with you to the home improvement store.

**Changing out** to a Low Flow or Dual Flush toilet is now more cost effective than ever before. Toilets that have excellent flush ratings are available at most hardware or building centers. The MaP rating is based on consumer studies comparing flush volumes and reliability over time. MaP ratings are explained at this Federal Gov't Website [http://www.cmhc-schl.gc.ca/en/co/grho/grho\\_006.cfm](http://www.cmhc-schl.gc.ca/en/co/grho/grho_006.cfm) Anything above an 800 score is an excellent choice.

## Faucets, Showerheads and Bathtubs:

An annoying, dripping sound is often the first sign of a leak. Faucets, showerheads and bathtubs may also have leaks hidden from view.

- Check under and around sinks for wet spots, a musty smell or bowed cabinetry and flooring
- Check for moisture around faucets, showerheads and bathtubs
- Look for dripping sink and bathtub faucets and showerheads
- Worn-out washers typically cause faucet and showerhead leaks.

If your showerhead fixture is aging, you may want to replace it with a new *Low Flow* model. The quality of water pressure and volume, which was a drawback to the first introduction of these fixtures, has vastly improved. The price has also declined, making them a smart choice.

## Did You Know??

A leaky showerhead or faucet that drips at the rate of one drip per second can waste more than 1130 litres or 250 gallons per month.

That equates to over 13,640 litres or 3,000 gallons of water or 300 loads of laundry per year!

