

WILLOWBROOK WATER SYSTEM



Outdoor Water Use Restrictions

YEAR ROUND

NO WATERING permitted on Mondays

NO SPRINKLING between 10am and 6pm

3 Days / Week

NORMAL

- ▶ NORMAL
- STAGE 1
- STAGE 2
- STAGE 3
- STAGE 4

www.rdos.bc.ca/restrictions

RESIDENTIAL WATERING RESTRICTIONS FOR SYSTEM USERS

STAGE NORMAL

The Regional District reminds residents that **Stage Normal** watering restrictions are in effect year-round or until situations change.

Even numbered civic addresses → Tuesday, Thursday and Saturday
Odd numbered civic addresses → Wednesday, Friday, and Sunday

Watering Established Lawns, Shrubs/Flowers	Newly Planted Sod, Trees or Flowering Shrubs	Outdoor Cleaning	Topping Up/ refilling Pools, Hot Tubs, Ponds or Water Features
<p><u>Manual Sprinklers</u></p> <p>3 days per week</p> <p>6:00 AM to 10:00 AM</p> <p>6:00 PM to 10:00 PM</p> <p>On your watering day</p>	<p><u>Seeded lawns or turf:</u></p> <p>- Any day at any time using any method for the first 49 days after installation of seeded lawns.</p>	<p><u>Driveways, sidewalks patios and decks:</u></p> <p>Any day, using any method provided it does not result in *Excess Water Use</p> <p><i>It is suggested to use a broom, or hose with spring loaded shut off nozzle</i></p>	<p>Any day at any time for volumes under 4,000 litres</p> <p>Note: for volumes above 40,000 litres, 24 hour notice must be provided to the RDOS</p>
<p><u>Automated irrigation systems</u></p> <p>12:01 AM to 6:00 AM</p> <p>On your watering day</p>	<p><u>Trees and flowering shrubs:</u></p> <p>- Any day at any time using any method for 21 days after planting of new trees and flowering shrubs. Stage 1 restriction are required after 21 days</p>	<p>* Excess water use is defined as applying more water than is required to provide a service, produce a product, or complete a task</p>	<div style="border: 2px solid red; padding: 10px; text-align: center;"> <p>No Sprinkling on Mondays</p> </div>
<p>Hand watering of flower and vegetable gardens is allowed daily.</p>	<p>Stage 'Normal' represents normal conditions for the local area and your water system. Water Restriction Stages are important to conserve water, minimize pumping costs and maintain adequate volumes (flow) for fighting fire.</p>		

More Watering Restriction Stages info visit:

<https://www.rdos.bc.ca/public-works/utilities/water-systems/>

Did you know...

The RDOS has implemented a new mass notification system for citizens and property owners within the regional district, called **CIVIC READY**. This new technology will enhance communication when it matters most; before, during and after an emergency event like floods or fires. **Also, for all RDOS owned and operated water systems, CIVIC READY will be useful for receiving notifications before any planned interruptions of service, such as utility project and construction events, power or water interruptions, and when water restriction stages are changed in response to local water supplies.**

How Do I Sign Up?

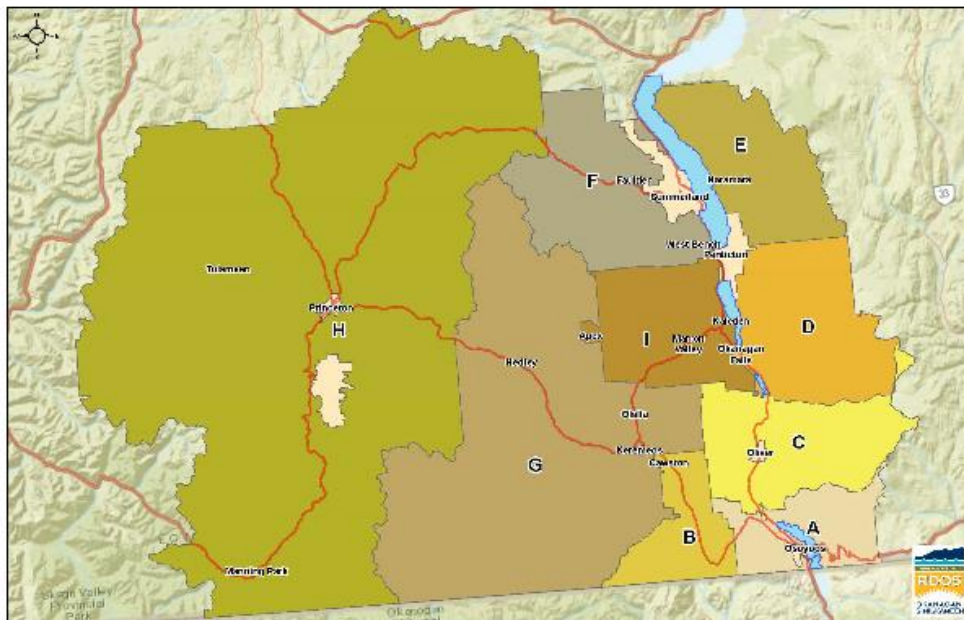
Simply go to the RDOS web site <http://www.rdos.bc.ca/news-events/civic-ready/> and follow the prompts.

How do I sign up?

It's easy! To create an account: Click on your electoral area on the map below, enter your contact information, select groups and join! Here is a step-by-step guide to assist you with signing up and navigating your CivicReady account:

[Step-By-Step Guide](#)

If you are already a member - Login [HERE](#)



PUBLIC WORKS CONTACT INFORMATION:

Public Works General

Phone: 250-490-4135

Water Quality

Phone: 250-490-4106

**After-Hours Emergency
Call Regional Dispatch**

Phone: 250-490-4141

Email : Info@rdos.bc.ca

**Regional District of Okanagan-Similkameen
Public Works Department**

May 22, 2020