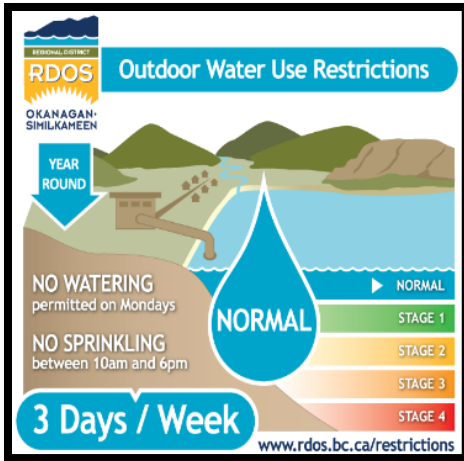


NEW Sage Mesa Water System (Includes Husula & Westwood Estates)



RESIDENTIAL WATERING RESTRICTIONS FOR SYSTEM USERS STAGE NORMAL

The Regional District of Okanagan-Similkameen together with the water system managers in Victoria have aligned Sage Mesa/Husula Highland/Westwood Estates Water System restrictions with other RDOS water systems. **Stage Normal** watering restrictions are in effect **year round** or until situations change.

Even numbered properties → **Tuesday, Thursday and Saturday**

Odd numbered properties → **Wednesday, Friday, and Sunday**

Watering Established Lawns, Shrubs/Flowers	Newly Planted Sod, Trees or Flowering Shrubs	Outdoor Cleaning	Topping Up/ refilling Pools, Hot Tubs, Ponds or Water Features
<p><u>Manual Sprinklers</u> 3 days per week 6:00 AM to 10:00 AM 6:00 PM to 10:00 PM On your watering day</p>	<p><u>Seeded lawns or turf:</u> - Any day at any time using any method for the first 49 days after installation of seeded lawns.</p>	<p><u>Driveways, sidewalks patios and decks:</u> Any day, using any method provided it does not result in *Excess Water Use <i>It is suggested to use a broom, or hose with spring loaded shut off nozzle</i></p>	<p>Any day at any time for volumes under 4,000 litres <i>Note: for volumes above 40,000 litres, 24 hour notice must be provided to the RDOS</i></p>
<p><u>Automated irrigation systems</u> 12:01 AM to 6:00 AM On your watering day Golf Courses Automated Systems: 8:00 pm - 8:00 am</p>	<p><u>Trees and flowering shrubs:</u> - Any day at any time using any method for 21 days after planting of new trees and flowering shrubs. Stage 1 restriction are required after 21 days</p>	<p>* Excess water use is defined as applying more water than is required to provide a service, produce a product, or complete a task</p>	<p>Please let us know When You Re- Fill Your Pool</p>
<p>Hand watering of flower and vegetable gardens is allowed daily.</p>	<p>Stage 'Normal' represents normal conditions for the local area and your water system. Water Restriction Stages are important to conserve water, minimize pumping costs and maintain adequate volumes (flow) for fighting fire.</p>		

No sprinkling on Mondays

Please let us know
When You Re- Fill Your Pool

For a complete list of all Watering Restriction Stages, visit:
<https://www.rdos.bc.ca/public-works/utilities/water-systems/>

Did you know....

The RDOS has implemented a new mass notification system for citizens and property owners within the regional district, called **CIVIC READY**. This new technology will enhance communication when it matters most; before, during and after an emergency event like floods or fires. **Also, for all RDOS owned and operated water systems, CIVIC READY will be useful for receiving notifications before any planned interruptions of service, such as utility project and construction events, power or water interruptions, and when water restriction stages are changed in response to local water supplies.**

How Do I Sign Up?

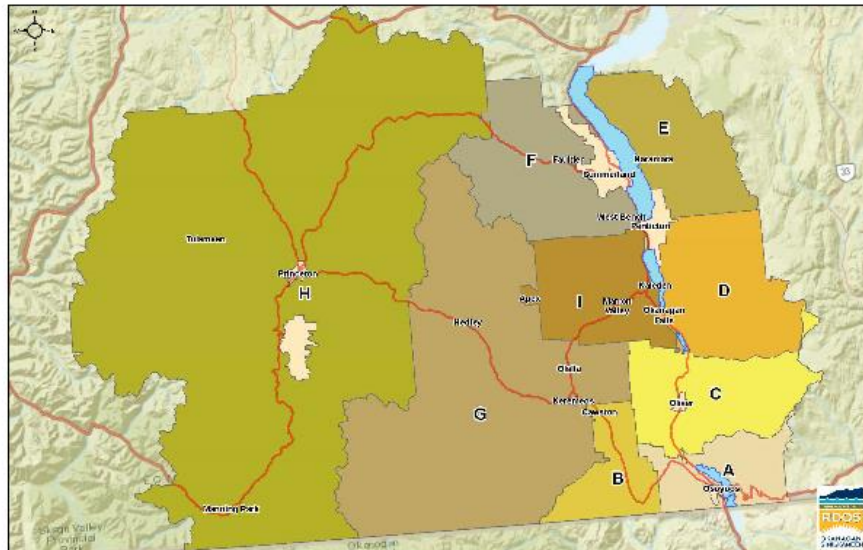
Simply go to the RDOS web site <http://www.rdos.bc.ca/news-events/civic-ready/> and follow the prompts.

How do I sign up?

It's easy! To create an account: Click on your electoral area on the map below, enter your contact information, select groups and join! Here is a step-by-step guide to assist you with signing up and navigating your CivicReady account:

[Step-By-Step Guide](#)

If you are already a member - Login [HERE](#)



For after-hours water-related emergencies, contact Regional Dispatch at 250.490.4141.

Regional District of Okanagan-Similkameen

Public Works Department

May 20, 2020