

2205 Naramata Rd, Naramata, BC

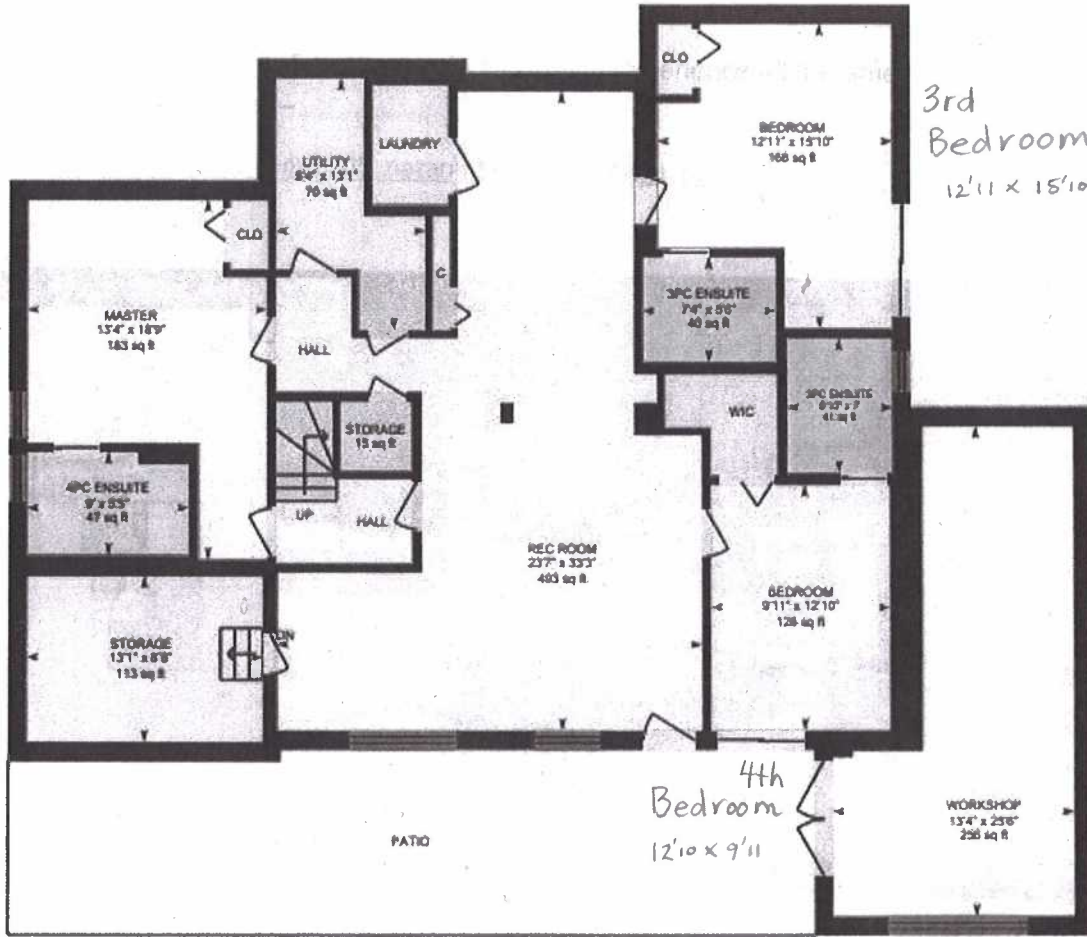
A7

Lower Floor Total Exterior Area 1827 sq ft
Total Interior Area 1610 sq ft

2nd Bedroom
13' x 18.9

3rd Bedroom
12'11 x 15'10

4th Bedroom
12'10 x 9'11



PREPARED: May, 2020



While regions are excluded from total floor area. All room dimensions and floor areas must be considered approximate and are subject to independent verification. For method of measurement please see <https://youriguide.com/measure/>.



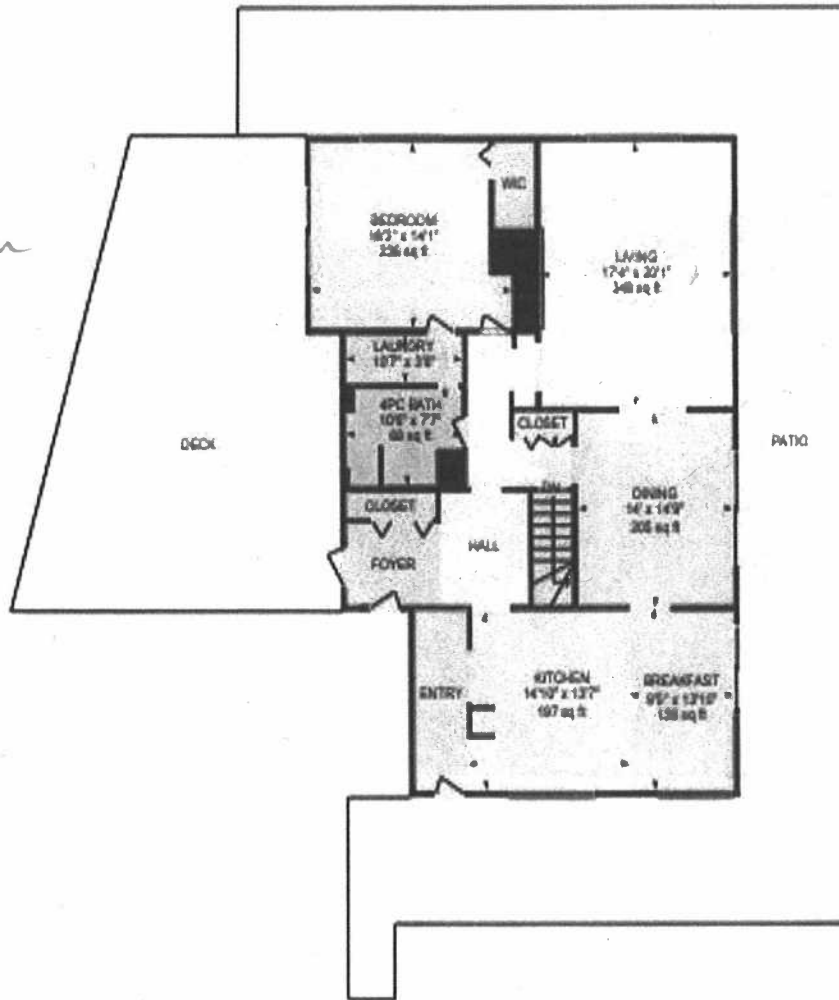
NOTES:

4 Bedrooms total

2205 Naramata Rd, Naramata, BC

Main Floor Total Exterior Area 1772 sq ft
Total Interior Area 1684 sq ft

1 Bedroom
18' x 14'



0 6 12
ft

PREPARED May, 2020



Note: Regions are excluded from total floor area. All room dimensions and floor areas must be considered approximate and are subject to independent verification. For method of measurement please see <https://youngguides.com/measure>

iGUIDE

Julius Bloomfield*(Personal Real Estate Corporation), Craig Henderson (Personal Real Estate Corporation), of Royal LePage Locations West Realty – 484 Main Street, Penticton, British Columbia, V2A 5C5, 250.493.2244, 1.800.734.0457 julius@vip.net, craig@vip.net / www.TeamBloomfield.ca
While all information is deemed to be accurate, it should not be relied upon without independent verification. Subject to change without notification.
This communication is not intended to cause or induce breach of an existing agency agreement