



## **Notice of Upcoming Bridge Closure**

**Please be advised that West Bench Bridge No. 1 (West Bench Hill Rd between Moorpark Dr & Russet Dr) will be closed to all traffic 7am-4pm on Saturday October 24th, 2020, for bridge surface maintenance.**

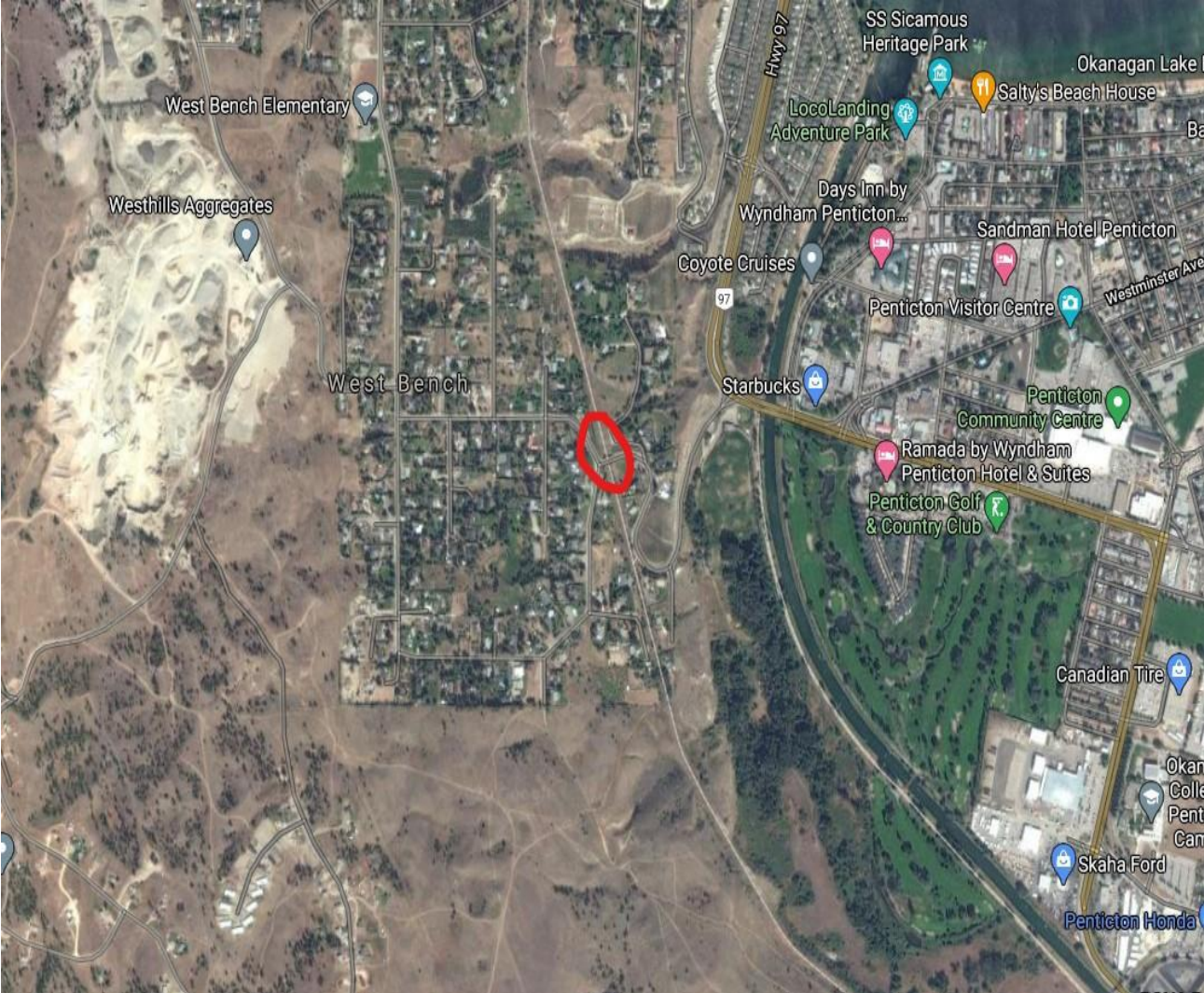
**The location of the bridge is high-lighted on page two of this document.**

**A detour is available via Sage Mesa Rd off of Hwy 97 and is high-lighted on page three.**

**AIM Roads will be advising the public via social media platforms of this event. Thank you for your cooperation during our project.**

**Inquiries may be directed through our AIM Roads Communication Centre at 866-222-4204.**

# LOCATION OF CLOSURE (GOOGLE MAPS)





# GOOGLE MAPS VIEW OF AVAILABLE DETOUR

