



71W22KC - Okanagan Complex

FIRE SIZE:
 Thomas Creek (K51794): 6960 ha (estimate)
 Brenda Creek (K51924): 662 ha (estimate)
 White Rock Lake (K61844) 7401 (estimate)

FIRE STATUS:
 Out of Control

THOMAS CREEK WILDFIRE (K51794)

This fire was first discovered on Sunday, July 11, 2021 and is approximately 5 kilometres northeast of Okanagan Falls.

CONDITIONS:

Fire growth was minimal again yesterday and last night with cooler temperatures. Winds this morning were calm; however, an increase in winds is predicted through Friday, which may result in elevated fire behaviour and additional fire growth.

OBJECTIVES:

Cooler temperatures allowed crews to make steady progress towards containment on the south flank. Today, crews will continue the work of reinforcing the guard line on the south and east flanks by extinguishing hotspots in these areas. Heavy equipment will be used to build contingency guard lines to the east of the fire. Crews continue to make good progress in securing and protecting the 201 road. This fire is being managed by a BC Wildfire Service incident management team as part of the Okanagan Complex. Aircraft and other resources may be reallocated from day to day within the complex as priorities shift.



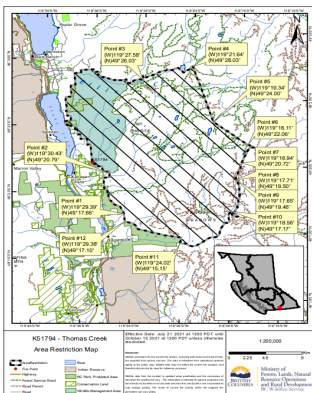
Source: [BC Wildfire Dashboard](https://www.bcwildfire.ca)

RESOURCES:

- Firefighters – 26**
- Heavy Equipment - 20**
- Helicopters – 5 assigned**

EVACUATION ALERTS & ORDERS:

The Regional District of Okanagan-Similkameen (RDOS) has issued an Evacuation Alert for 704 properties in Electoral Area "D." More information is available here: <https://www.rdos.bc.ca/>



AREA RESTRICTION :

In the interest of public and responder safety, a new Area Restriction was implemented for the Thomas Creek Wildfire area on July 21, 2021 @ noon. More information is available, including a map at: www.bcwildfire.bc.ca

This Area Restriction is an expansion of the Area restriction implemented on July 14 to include the 201 Road since burned over trees on both sides of the road are susceptible to falling down over the road and adjacent areas.



Crewmembers on a dusty guard on July 15

ADDITIONAL CONTACT INFORMATION:

71W22KC - Okanagan Complex Information Section

Telephone: 250-230-3670 | Email: BCWS.Okanagan.Complex.Info@gov.bc.ca





BRENDA CREEK WILDFIRE (K51924)

This fire was first discovered on Wednesday, July 14, 2021 and is an interface fire.

CONDITIONS:

Yesterday, favorable winds allowed crews to reinforce sections of guard line on the north west corner of the fire by burning off the fuel between the guard and the fire with small, hand ignition operations. These north west winds did cause some growth to the east and south of the fire, but did not impact the transmission line.

OBJECTIVES:

Staff are working to identify and build contingency lines on active flanks of the fire. Helicopters were used to bucket water on to hotspots yesterday, and will continue this effort today.

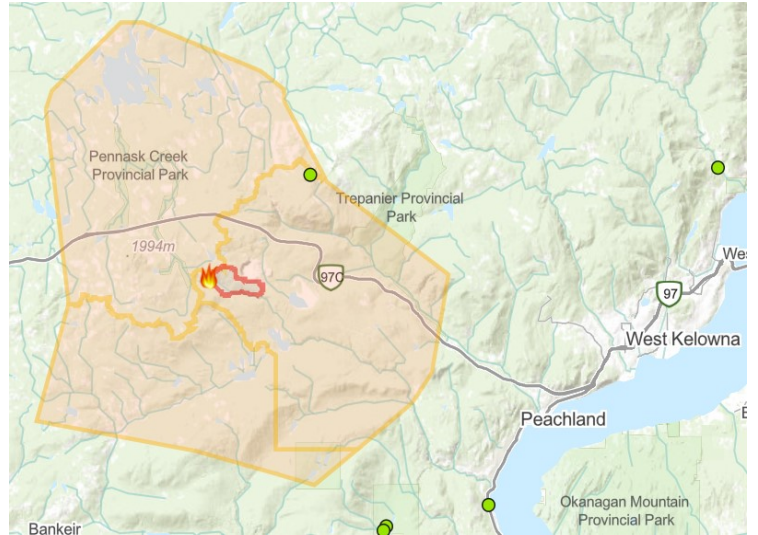
A mass water delivery system is now in place to protect the section of the transmission line within the fire perimeter. This delivery system consists of a 4-inch hose line that supplies a series of larger sprinklers. A specialized high-volume pump supplies water to the line, which can be turned on quickly if the threat to the transmission line increases due to increased fire activity. 4 firefighters and 3 support staff remained on site last night to monitor the fire and protect high value features.

STRUCTURAL PROTECTION:

1 task force leader, 1 structure protection unit (5 crew), 2 mass water delivery units, with 1 on homes and 1 on the powerline (3 crew) and 1 structure protection trailer are on site. They are supported by 16 firefighters from 4 different local fire departments, who are making good progress on extinguishing fire along the power line.



South East Flank of Brenda Creek Fire (K51924) on July 21



The Brenda Creek Wildfire is approximately 40 kilometers west of West Kelowna, south of the Okanagan Connector.

Source: [BC Wildfire Dashboard](#)

RESOURCES:

Firefighters – 42

Heavy Equipment - 14

Helicopters – 3 assigned

EVACUATION ALERTS, ORDERS & AREA RESTRICTIONS:

The [Regional District of Okanagan-Similkameen](#) (RDOS) has issued an Evacuation Order for 43 properties. An Evacuation Alert has also been issued for Eneas Lakes Provincial Park.

The [Thompson-Nicola Regional District](#) (TNRD) has issued an Evacuation Alert for three properties located in Electoral Area "M."

The Regional District of Central Okanagan (RDCO) has issued an Evacuation Alert for properties, three recreational camping areas and Crown land within West Electoral Area, south of Highway 97C and northwest of Peachland. Please contact the [Regional District Central Okanagan](#) for more information.

An Area Restriction is in effect as of noon on July 17, 2021. More information is available, including a map at: www.bc.wildfire.ca

WHITE ROCK LAKE WILDFIRE (K61844)

This fire was first discovered on Tuesday, July 13, 2021 and is an interface fire.

CONDITIONS:

The fire was active on the north flank yesterday. Crews and resources may be challenged by an increase in fire behavior caused by forecasted winds. Temperatures are expected to be cooler today.

OBJECTIVES:

BC Wildfire Service personnel continue to work with industry partners on site to establish and reinforce guard lines, and to protect critical infrastructure. A structural protection specialist is on site, assessing and prioritizing critical infrastructure and properties.

The use of airtankers was not possible yesterday due to high winds, heavy smoke and steep terrain. The BC Wildfire service will continue to re-evaluate the opportunity for airtanker support, and airtankers may be used to apply retardant to the fire if conditions allow.

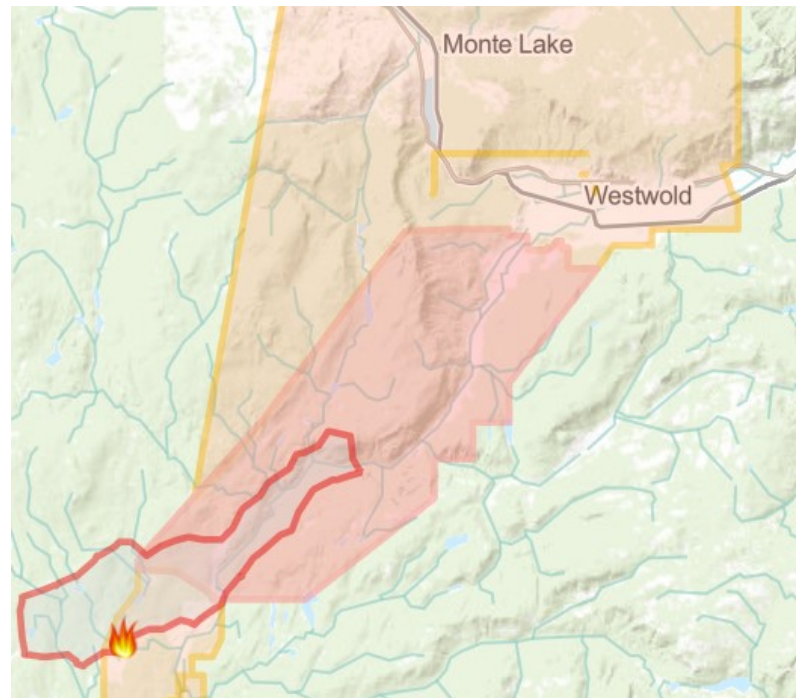
3 helicopters will be bucketing water on to the fire today.

Additional ground crews are expected to arrive on this fire in the next few days.

There have been smoke impacts to the hydro line in the area, with multiple outages occurring due to the smoke.



South Flank of White Rock Lake Fire (K61884) on July 21



The White Rock Lake Wildfire is approximately 56 kilometers northeast of Merritt.

RESOURCES:

- Fire Fighters – 19 (partnering with fire departments and the RCMP)
- Heavy Equipment - 26
- Helicopters – 3 assigned
- Structural Protection Units—1

EVACUATION ALERTS, ORDERS & AREA RESTRICTIONS:

The Thompson-Nicola Regional District (TNRD) has implemented multiple Evacuation Orders and Evacuation Alerts for properties in the area. Please contact the Thompson-Nicola Regional District for more information: <https://www.tnrd.ca/>

**FIRE
DANGER
RATING**

