

Fact Sheet

British Columbia Register of Historic Places (BCRHP)

Updated August 2012

What is the process for listing a historic place on the BCRHP?

Within 30 days after formally recognizing a historic place, local governments are required to notify the owner and the Minister responsible for the *Heritage Conservation Act*. Typically, the Ministry notification is sent to the BC Registrar at the Heritage Branch. These historic places are then added to the BCRHP. By mid 2012, over 3300 formally recognized historic places have been listed on the BCRHP.

The Heritage Branch uses a GIS linked database called the Heritage Resource Inventory Application (HRIA), which is shared with the Archaeology Branch.

Each historic place is assigned a unique site identification number and its physical extent is plotted on the spatial view in HRIA.

Attribute information for each site is then added, including name(s), location, formal recognition (authority, statute, date), historical information (construction date, historic and current use, themes, architect/builder), images, and links. A key element is the Statement of Significance, which explains the heritage value of the place.

What is the BC Register of Historic Places?

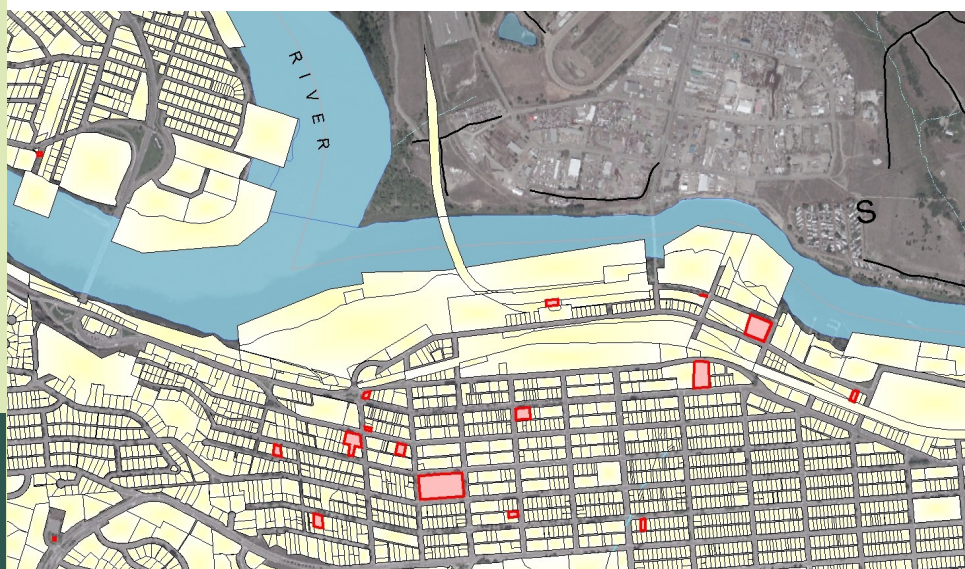
The BC Register of Historic Places (BCRHP) is the official provincial list of historic places in British Columbia that have been formally recognized for their heritage value by local governments, regional governments and/or the Province, using heritage conservation powers available in the *Local Government Act* (LGA) or other legislation.

At the local government level, the most common types of formal recognition are: Community Heritage Register listing, heritage designation, Heritage Conservation Areas and Heritage Revitalization Agreements. At the provincial level, formal recognition typically involves heritage designation under the *Heritage Conservation Act*.

As part of the formal recognition process, the Heritage Branch encourages local governments to record the heritage values of each formally recognized historic place in a Statement of Significance (SoS), which is integral to the Community Heritage Register and the BCRHP as a permanent record of the reasons why the place is valued by its community. For more information on Statements of Significance, refer to *Guidelines for Writing Statements of Significance*, available from the Heritage Branch website.

Information about historic places listed on the BCRHP can be obtained by contacting the BC Registrar. Local government officials may also view the BCRHP listings via the Remote Access to Archaeological Data (RAAD) application developed by the Archaeology Branch. For information on how to obtain access to RAAD, contact the Archaeology Branch or visit:

www.for.gov.bc.ca/archaeology/accessing_archaeological_data/index.htm



Heritage Branch

www.for.gov.bc.ca/heritage

What is the Canadian Register of Historic Places (CRHP)?

The Canadian Register of Historic Places is a searchable database of information about formally recognized historic places of local, provincial, territorial and national significance. It is accessible to the public on the national Historic Places website at www.historicplaces.ca and is used for tourism, education and commemorative purposes.

The CRHP is maintained by Parks Canada, as part of the Historic Places Initiative (HPI), a federal-provincial-territorial collaboration that works to build a “culture of conservation” across Canada.

What is the process for listing a historic place on the Canadian Register?

Most historic places in British Columbia are nominated to the Canadian Register by the BC Registrar. Historic places in BC that are formally recognized by the federal government are nominated by the federal Registrar.

To be eligible for nomination to the CRHP by the BC Registrar, a historic place must be:

- ◆ Formally recognized by local or provincial government
- ◆ Fully documented to BCRHP and CRHP data standards including a Statement of Significance
- ◆ Listed on the BC Register of Historic Places

The Canadian Registrar is responsible for reviewing records submitted by the provincial and territorial registrars and posting these records on the HPI website. Over 1750 BC historic places are already listed on the CRHP.

The Heritage Branch provides a data entry template to help local governments meet the data standards for the BCRHP and CRHP. Editing and quality assurance of incoming records is carried out by Branch staff.

Community Heritage Register Listing vs. Heritage Designation:

What's the difference?

CHR Listing

- ◆ identifies a historic place that the community deems to have heritage value
- ◆ does not provide permanent legal protection
- ◆ is enacted by Council resolution

Heritage Designation

- ◆ provides permanent legal protection for a historic place
- ◆ changes require a Heritage Alteration Permit
- ◆ is enacted by bylaw

A property may be listed on a heritage register, or have heritage designation, or both.

For more information, contact Heritage Branch:

PO Box 9818 STN PROV GOVT
Victoria, BC V8W 9W3

E: heritage@gov.bc.ca

T: 250 356-1432

F: 250 356-2842

www.for.gov.bc.ca/heritage

