



REGIONAL DISTRICT OF OKANAGAN-SIMILKAMEEN

INFORMATION RELEASE

June 10, 2026

snpink'tn Indian Band, City of Penticton, District of Summerland, and RDOS confirm closure of KVR Corridor

Channel walkway remains open; partners working together on long-term plan

snpink'tn Indian Band confirms that the Kettle Valley Railway (KVR) corridor on Band-owned lands between Summerland and Banbury Green will remain closed to public access due to serious **safety hazards and ongoing unauthorized access. The Channel walkway is not part of the KVR corridor and remains open for public use. The closure area is shown on the attached map.**

The KVR corridor through this area is private land owned by snpink'tn. The City of Penticton, the District of Summerland, and the Regional District of Okanagan Similkameen (RDOS) support the closure and will assist snpink'tn with access prevention and monitoring while the parties work collaboratively to address the risks.

Independent technical assessments have identified serious geohazards throughout the corridor. Along the southern section near Skaha Lake, rockfall remains a significant and active hazard. Earlier this year, a boulder the size of a car fell from the cliffs above the trail. Multiple additional rockfalls have been documented in recent years, and the volcanic rock in the area is prone to continued weathering and failure. In the northern and West Bench sections, sinkholes caused by deteriorating buried railway structures from the original 1920s construction, unstable ground conditions, and dozens of unauthorized access points continue to create risk for trail users, staff, emergency responders, and nearby lands.

The corridor is also experiencing impacts from unauthorized use that go beyond trespass. Recent human-caused fires have been discovered and extinguished on or near the corridor, posing a direct threat to surrounding lands, homes, and ecosystems. Illegal dumping has been documented at multiple locations. People leaving the trail are accessing adjacent reserve lands, damaging sensitive habitat, and creating additional fire and safety risks.

To support the closure, barriers and signage will be erected at targeted access points along the corridor. Despite existing posted closures, warning signs, and physical barriers, members of the public continue to enter the closed corridor.



Serving the citizens of the Okanagan-Similkameen since 1966.

www.rdos.bc.ca

In some cases, signs and barriers placed around hazardous areas have been moved or removed. This conduct is dangerous and may expose individuals to legal liability.

Quotes

snpink'tn Indian Band Chief Greg Gabriel stated, "This land is part of our territory and we take that responsibility seriously. We have a duty to protect the people who use this corridor, including our own community members, and right now the conditions are not safe. We also have a responsibility to our community to make sure that any decisions about the future of this corridor reflect what our people want. snpink'tn, the RDOS, Penticton, and Summerland are working together on a long-term plan, and when it is ready, we will bring it to our community for consideration. In the meantime, we are asking everyone to please respect the closure."

Penticton Mayor Julius Bloomfield stated, "Public safety has to come first. The hazards identified along this section of the KVR corridor are serious and ongoing, and we strongly support the snpink'tn Indian Band's decision to close the area. We're asking residents and visitors to respect the closure and stay within open, designated routes. This work is rooted in strong community collaboration, and we are committed to continuing that partnership with snpink'tn, Summerland and the RDOS as we develop a long-term solution that protects both people and this important landscape."

Summerland Mayor Doug Holmes stated, "Summerland residents are welcome to go onto the Trout Creek Trestle to enjoy the views but are being asked not to proceed further onto snpink'tn reserve lands. Not only do the unstable banks and cracks in bedrock pose a safety risk to mountain bikers and hikers, it is disrespectful and illegal to trespass on reserve lands."

RDOS Chair Mark Pendergraft stated, "The RDOS stands alongside the snpink'tn Indian Band, the City of Penticton, and the District of Summerland in supporting the closure of the KVR corridor due to serious safety hazards. This coordinated approach reflects our shared responsibility to protect people, the land, and our commitment to working together collaboratively as we develop a long-term plan for the corridor."

Looking Ahead

snpink'tn Indian Band, the RDOS, the City of Penticton, the District of Summerland, Trans Canada Trail, and other partners are working together to develop a long-term plan for the corridor that addresses safety, trail rehabilitation, access management, and cultural and environmental protection. Updates will be provided as this work advances.

The public is reminded: Keeping this corridor safe is a shared responsibility.

The public is asked not to enter the closed KVR corridor, remove signs, move barriers, bypass closures, stop in hazardous areas, light fires, dump waste, or access adjacent reserve lands. These actions can put you, your family, and others at serious risk. By respecting the closure, you are helping to protect both the people and the land while we work together on a path forward.

-30-



Media Contacts:

Penticton Indian Band

Lesley Gabriel
Communications Manager
lgabriel@pib.ca
(250) 493 0048 ext. 238

City of Penticton

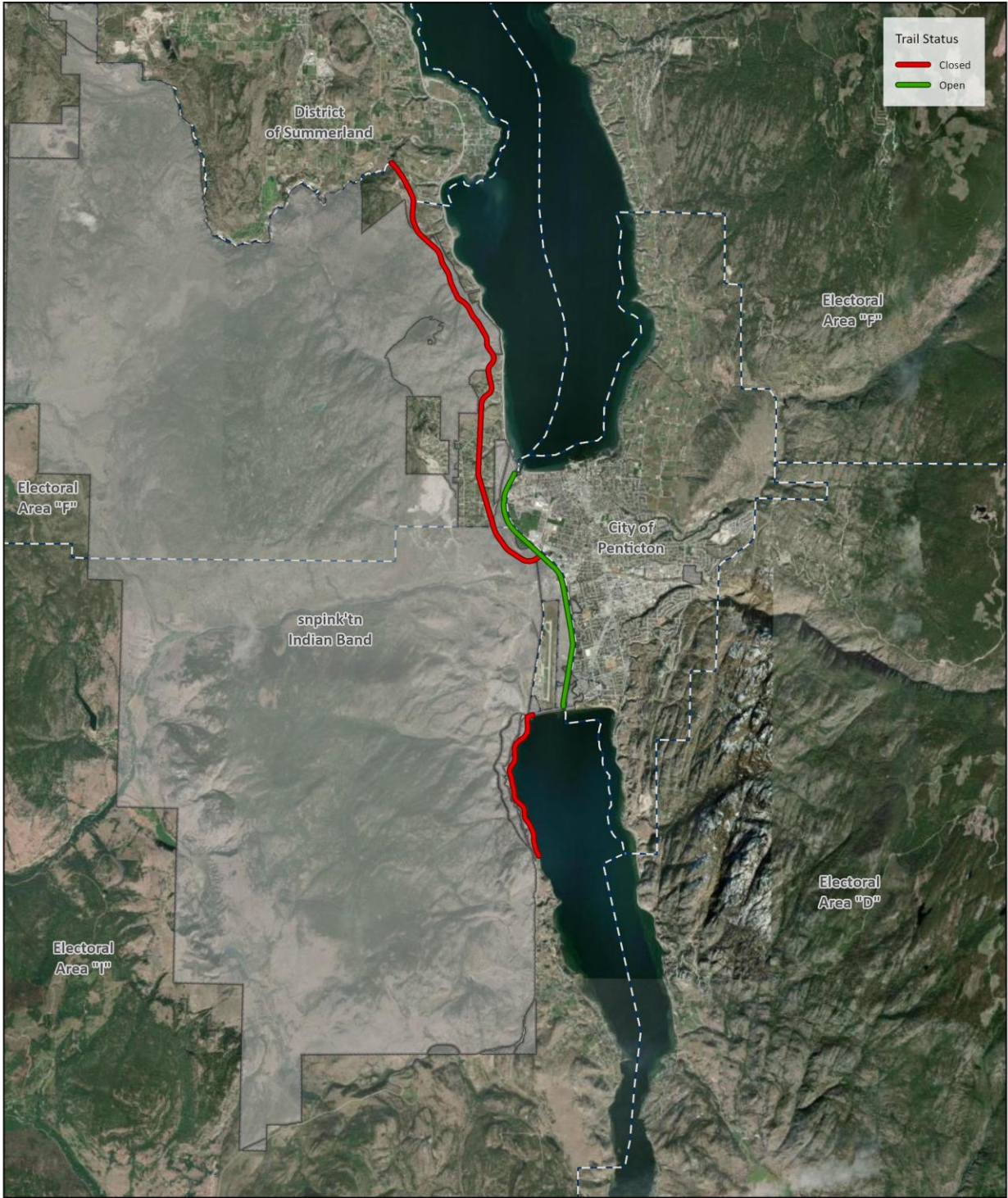
communications@penticton.ca
250-809-5623

District of Summerland

communications@summerland.ca
250-494-6451

Regional District of Okanagan-Similkameen

RDOS Communications
250-490-4148
Toll-free 1-877-610-3737



KVR Corridor Closure Areas



[Kettle Valley Rail \(KVR\) Trail](#)