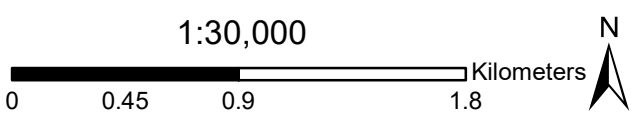


Kettle Valley Rail Trail

Glenfir Trail head to Adra Tunnel

2nd Track Access Restrictions

- Legend**
- Robinson Creek Culvert Project
 - Tunnel
 - Trailhead/ Rec Sites
 - Kettle Valley Rail Trail
 - KV-034 Detour
 - Non-motorized ORV
 - No Highway Vehicles
 - 2nd to 3rd Track Connector
 - Naramata Creek FSR
 - Smethurst Road
 - Chute Lake Road
 - North Naramata Road
 - Robinson Creek
 - Rock Ovens Regional Park
 - Recreation Sites and Parks



Coordinate System: NAD 1983 BC Environment Albers
Projection: Albers
Datum: North American 1983

