



**FIRE NAME**

Keremeos Creek (K50863)

**FIRE SIZE:**

6948 hectares (estimated)

**FIRE STATUS:**

Out of Control

**RESOURCES:**

Two hundred and seventy two wildland firefighters are assigned to this fire working with an additional 10 structural protection personnel from fire departments across BC for a total crew complement of 292 firefighters. Fourteen helicopters and 22 pieces of heavy

**UPDATES:**

Communities near the northwest and southwest corners of Keremeos Creek wildfire can expect to see increased smoke today, August. 17. Cooler temperatures and increased humidity over the weekend decreased fire activity but fire behaviour is expected to increase as the current warming and drying trend continues. Crews continue to make progress on containment lines and most sections of the fire remain stable. The wildfire’s western flank is most active and currently burning in steep, difficult terrain. The forecast predicts a continuing warming trend for the next couple of days, and lower relative humidity expected with moderate overnight recoveries.



August 16—Keremeos Creek Wildfire

**Assignments:** The fire is currently stable along the western side of Highway 3A, and operational objectives remain mostly the same there. August 15 and 16 saw the most activity in the northwest and southwest corners of the fire in steep terrain. A thermal aerial scan was completed last night August 15, and scanning will continue tonight, to identify hot spots around the fire perimeter from McKay Creek to Olalla. Once completed, crews will seek and eliminate remaining hot spots.

**West:**

- The Northwest flank continues to be the most active section of the fire, suppression efforts are challenged by steep terrain that is inaccessible to crews and heavy equipment.
- From Keremeos Creek Road to Green Mountain Road crews are extinguishing hot spots and removing combustible fuel 25 foot in from the fire perimeter, a process known as blacklining.
- Along Olalla Creek Road and Highway 3A crews are patrolling and establishing a 100 foot blackline in from the fire perimeter.

**East:**

- Danger Tree Accessors and fallers continue to patrol this area of the fire and ensure areas are safe within the fire perimeter.
- Crews continue to patrol and mop-up along the fire perimeter between Sheep Creek Road and Highway 3A.

**Structure Protection:**

- Structure Protection is demobilizing equipment at Apex Mountain.
- Water tenders will continue to restock relay tanks used for crews and fire suppression activities.

**ADDITIONAL CONTACT INFORMATION:**

**Information Officer:** Karley Desrosiers and Paula Walbauer | Hours: 0800-2000

Phone: (778) 362-4872 | Email: [BCWS.KeremeosCreekINFO@gov.bc.ca](mailto:BCWS.KeremeosCreekINFO@gov.bc.ca)





**EVACUATION ALERTS AND ORDERS:**

BC Wildfire Service has worked with the Regional District of Okanagan-Similkameen, Village of Keremeos, Penticton Indian Band, Lower Similkameen Indian Band and Okanagan Nation Alliance to provide information to keep residents safe.

Recommendations for Evacuation Orders and Alerts are based on current and forecasted conditions to proactively keep people safe, and so BCWS can actively work the fire. For more information about Evacuation Orders and Alerts go to: [Regional District of Okanagan-Similkameen](#), [Village of Keremeos](#), and [Penticton Indian Band](#).

**Safety**

The BC Wildfire Service reminds members of the public that the Keremeos Creek wildfire is an active worksite and they should exercise caution at all times while travelling in the area and along the Highway 3A corridor. The Keremeos Creek Forest Service Road is now closed to ensure the safety of both the public and BC Wildfire Personnel. We would like to ask all residents that if they are driving on ANY roads in the vicinity of the Keremeos Creek Wildfire to slow down. Crews and equipment are being moved using roads in the area. Please slow down and stay alert! Before entering any area affected by a wildfire, members of the public should be aware that significant safety hazards may be present.

Nearby communities can still expect to see smoke within the fire's perimeter over the coming weeks. This is common with large wildfires, and smoke will continue to be visible until there is significant rainfall at the site. Smoke appearing from well within the fire perimeter and burned material is common. However, smoke that rises from green, unburned fuel or from outside of fire's perimeter should be reported. To report a wildfire or open burning violation, call 1 800 663-5555 toll-free or \*5555 on a cellphone.



August 16—Keremeos Creek Wildfire



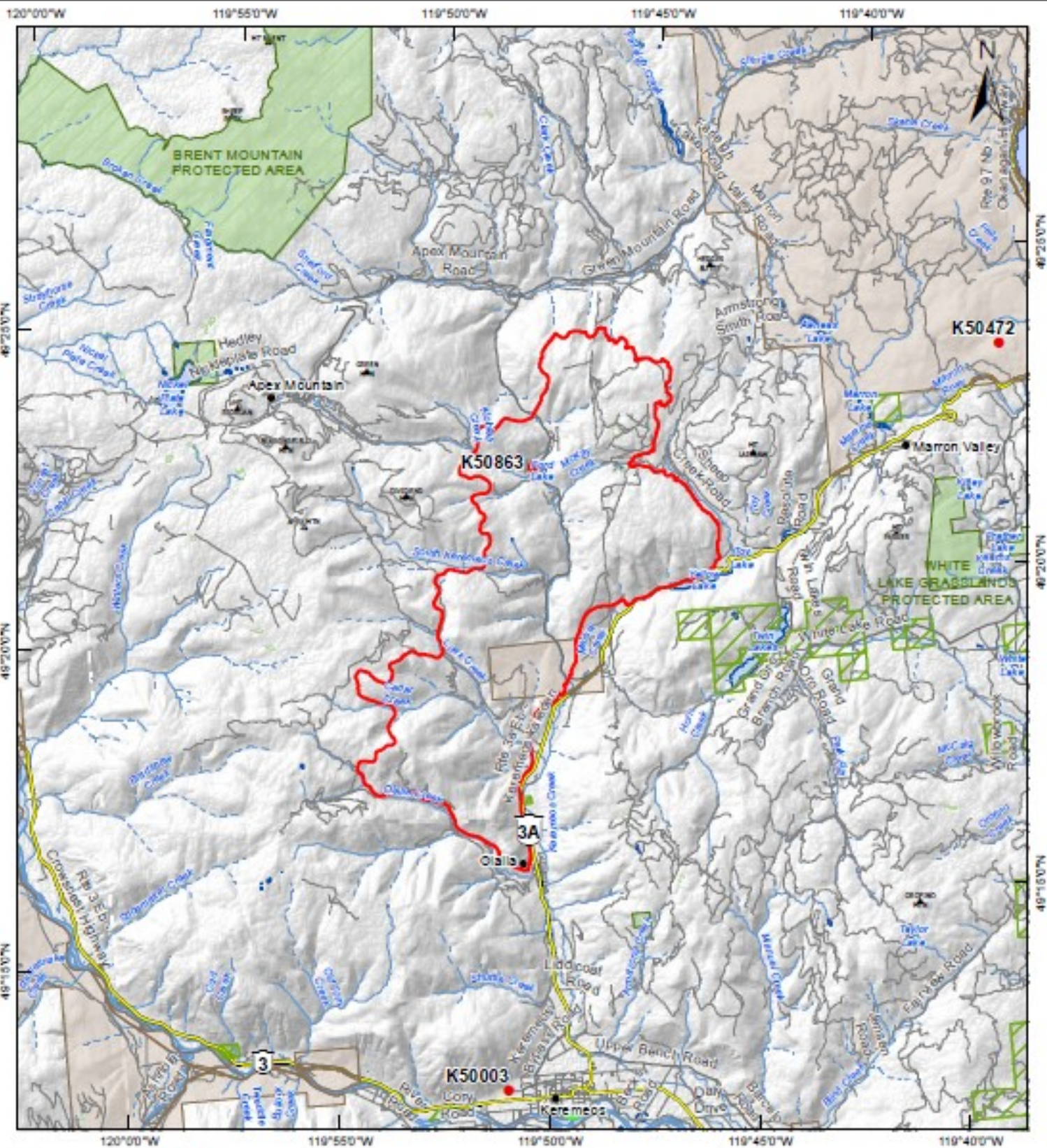
**BC Wildfire App:**

The official BC Wildfire Service mobile app is available for free download in the [App Store](#) and on [Google Play](#).

Additional information is provided in the [BCWS Mobile App Reference](#)

**Spot a wildfire, smoke or illegal fire activity? Call 1 800 663-5555 or \*5555 on your cellphone.**





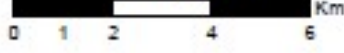
- Fire Point
- Populated Place
- ▲ Mountain
- Stream
- BC Park, Protected Area, Eco Reserve
- NGO Conservation Land
- First Nation Reserve
- Fire Perimeter
- Road
- Highway
- Stream - Intermittent

### K50863 - Keremoes Creek

#### PUBLIC INFORMATION MAP

Perimeter Date: 2022-08-13  
 Hectares: 6949 HA

1:150,000



**Disclaimer:**  
 Wildfire perimeters for the current fire season, including both active and inactive fires, are supplied from various sources. The data is refreshed from operational systems nightly to the public map. Wildfire data may not reflect the current fire situation, and therefore should only be used for reference purposes.  
 Wildfire data from this incident is updated when practicable and the occurrence of individual fire updates will vary. The information is intended for general purposes only and should not be relied on as accurate because fires are dynamic and circumstances may change quickly. The levels of current fire activity within the mapped fire perimeter can vary widely.

