

EMERGENCY OPERATIONS CENTRE (EOC)

EVACUATION ORDER July 31, 2023, 12:00, **Eagle Bluff Wildfire**

Pursuant to Section 13 (1) of the BC Emergency Program Act an **Evacuation Order** has been issued by the Town of Osoyoos to protect the health, safety or welfare of a person or to limit damage to property due to: Wildfire.

Members of the RCMP and other agencies under the direction of RCMP will be expediting this action.


The **Evacuation Order** is in effect for the following areas:

- Osoyoos Industrial Park

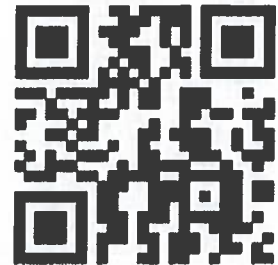
Visit the RDOS EOC website for resource links and information updates:
<https://emergency.rdos.bc.ca/resources/>



Jim Zaffino, EOC Director
Regional District of Okanagan-Similkameen



Rod Risling, EOC Director
Town of Osoyoos



Link to Latest Updates

EMERGENCY OPERATIONS CENTRE (EOC)

Schedule 1 – List of Properties

10201 115TH ST	11129 115TH ST	11620 115TH ST
10401 115TH ST	11200 115TH ST	11621 115TH ST
10600 115TH ST	11201 115TH ST	11624 115TH ST
10601 115TH ST	11401 115TH ST	11625 115TH ST
10800 115TH ST	11500 115TH ST	11626 115TH ST
10801 115TH ST	11601 115TH ST	11628 115TH ST
10900 115TH ST	11602 115TH ST	11630 115TH ST
10901 115TH ST	11609 115TH ST	11634 115TH ST
11000 115TH ST	11610 115TH ST	11636 115TH ST
11001 115TH ST	11611 115TH ST	11638 115TH ST
11007 115TH ST	11613 115TH ST	11640 115TH ST
11100 115TH ST	11615 115TH ST	11642 115TH ST
11106 115TH ST	11617 115TH ST	11646 115TH ST
11110 115TH ST	11619 115TH ST	9410 115TH ST

11601 STRAWBERRY CK RD

LOT 1002, PLAN KAP30610, DISTRICT LOT 2450S, SIMILKAMEEN DIV OF YALE LAND DISTRICT, EXCEPT PLAN 31344 32242 32850 KAP49635 KAP73121

LOT 1003, PLAN KAP31183, DISTRICT LOT 2450S, SIMILKAMEEN DIV OF YALE LAND DISTRICT, EXCEPT PLAN KAP57535 KAP59457, & EXC PL KAP58832 (LEASE)

LOT 2, PLAN KAP57086, DISTRICT LOT 2450S, SIMILKAMEEN DIV OF YALE LAND DISTRICT, EXCEPT PLAN KAP86183

LOT B, PLAN KAP73248, DISTRICT LOT 2450S, SIMILKAMEEN DIV OF YALE LAND DISTRICT

LOT B, PLAN KAP73911, DISTRICT LOT 2450S, SIMILKAMEEN DIV OF YALE LAND DISTRICT

LOT B, PLAN KAP85587, DISTRICT LOT 2450S, SIMILKAMEEN DIV OF YALE LAND DISTRICT

YOU MUST LEAVE THE AREA IMMEDIATELY

Follow RDOS on Facebook Twitter YouTube LinkedIn

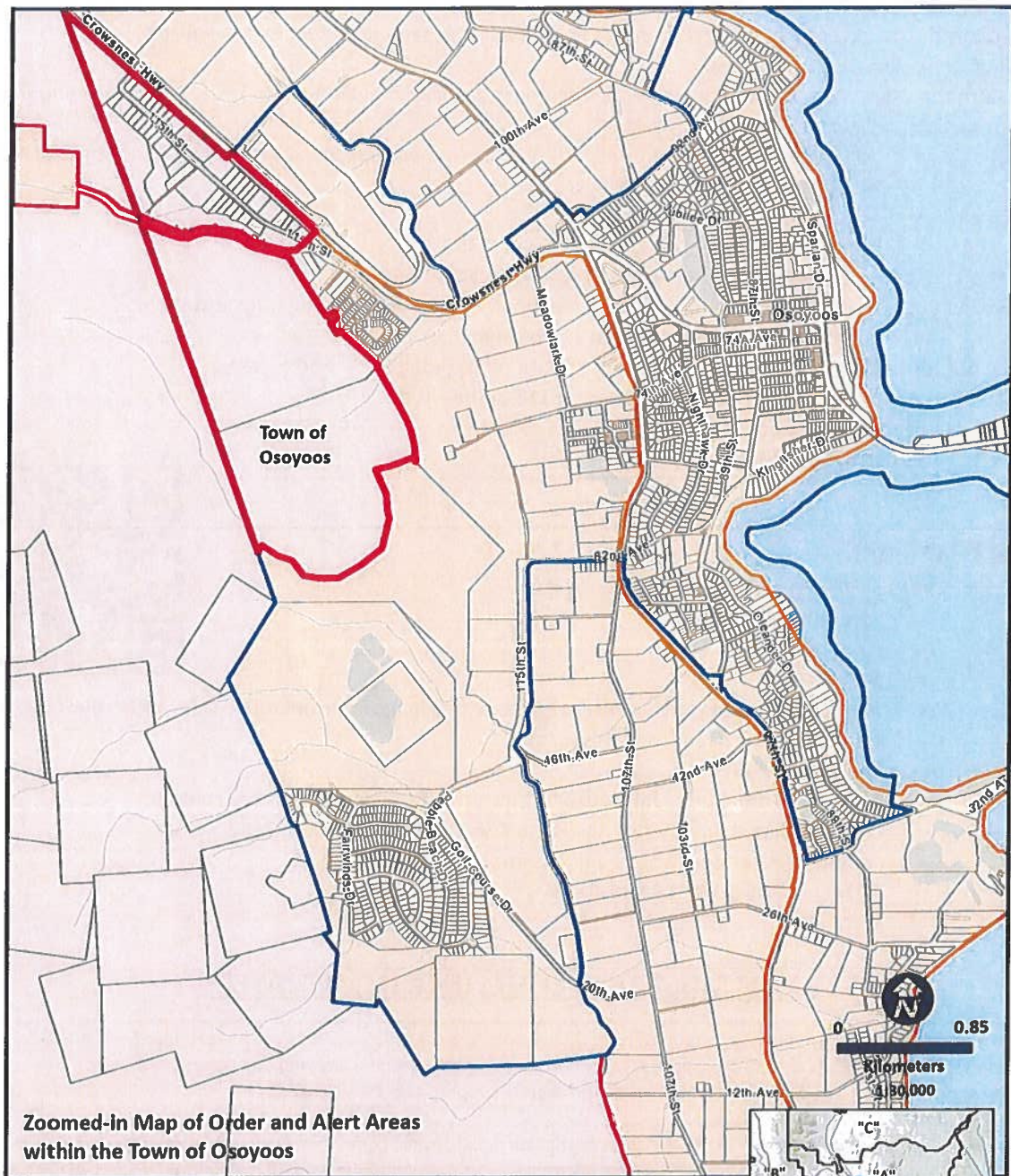
Website: emergency.rdos.bc.ca Email: eocinfo@rdos.bc.ca Phone: 250-490-4225

Voyent Alert! notifications – sign up for routine and emergency notifications

Issued by Director of RDOS EOC

EMERGENCY OPERATIONS CENTRE (EOC)

Schedule 2 - Evacuation Order Map



Zoomed-in Map of Order and Alert Areas within the Town of Osyoos



EMERGENCY OPERATIONS CENTRE (EOC)

WHAT YOU SHOULD DO:

- You must leave the area **immediately**.
- Follow directions of emergency responders and travel designated or safest route available.
- Register online at ess.gov.bc.ca
- Go to the **Oliver Community Centre – Meeting Room 2, Located at 6359 Park Drive, Oliver BC** if you require immediate assistance
 - Due to a shortage of commercial/hotel accommodation, consider making arrangements to stay with family or friends if possible.
 - Take pets with you if you can.
 - For ESS Support by phone, call **250-486-1890**
- If you need transportation assistance, call **RDOS EOC: 250-490-4225**
- Gather your family; if you have room, take a neighbor or someone needing transportation.
 - Do not use more vehicles than you have to.
- **Do not turn off your natural gas. FortisBC will turn off natural gas service as needed.**
- Store your Firearms in accordance with Section 118 of the Firearms Act.
- Close all windows and doors.
- Close gates (latch) **but do not lock**.

WHAT TO TAKE:

- Critical items only if they are immediately available:
 - government-issued ID
 - medications
 - eyeglasses
 - valuable papers (e.g. insurance, credit, and mortgage information)
 - immediate care needs for dependents
- Pets in pet kennels or on leash.
 - **Pet owners and hobby farmers** with concerns for their animals *may* contact:
 - **Animal Emergency Response Team (ALERT): 250-809-7152**
 - **Commercial Farmers** who require assistance *may* contact:
 - **RDOS EOC: 250-490-4225**



[Link to Latest Updates](#)

YOU MUST LEAVE THE AREA IMMEDIATELY

At the Reception Centre – Emergency Support Service (ESS) volunteers are able to assist you to meet your basic needs by providing service for up to 72 hours. This may include coordinating food, clothing, lodging and transportation.

- **If you are not able to attend the reception center and require support, call 250-486-1890.**
- **An ESS volunteer will return your call.**

ESS is a safety net program available when alternatives such as family, friends, and insurance cannot be accessed. ESS is not offered if insurance is accessible. In situations where insurance exists, but cannot be immediately accessed, interim support may be provided.